



MODEL EMT - MHL - 5

LOW HEAD ROOM ELECTRIC CHAIN HOIST Model (EMT-MHL-5 0.5 to 5.0 ton)

Capacity (ton)	Lift (mm)	Hoisting Speed (m/min)		Hoist Motor (kw)		Trolley Speed (m/min)		Trolley Motor 200V		Load Chain		Opening dimension (mm)	Width of Beams (mm)	Minimum Curve Radius (m)	Net Weight (approx.) X (kg)	Test load (ton)	Major Dimension (approx.) (mm)											
		50 Hz	60 Hz	50 Hz	60 Hz	50 Hz	60 Hz	Out put (kw)	Rating (min)	Dia (mm)	No. of falls						A	B	H	I	K	L	M	X P	X Q	R	S	W
0.5	8.6	10	0.83	1.0								360	75, 100, 125	-	100	0.625	265	285	b/2 +230	240	32	32	655	415	465 -T ₁		240	500
1	6.2	7.3	1.17	1.4								360	75, 100, 125	-	100	1.25	285	285	b/2 +285		-T ₁	-T ₁			465 -T ₁			
2	4	6.7	7.9			10	12		30			605	100, 125, 150	-	185	2.5			b/2 +335	b/2 +235	35 -T ₁	35 -T ₁			595 -T ₁	4,000	350	500
3	4.4	5.2	2.5	3.0					0.4			550	100, 125, 150	-	225	3.75	335	335	b/2 +340	b/2 +240	37 -T ₁	37 -T ₁	720	560	600 -T ₁			
5	2.2	2.6										680	125, 150, 170	-	260	6.25			b/2 +245	b/2 +245	38 -T ₁	38 -T ₁	910	620	610 -T ₁		405	600

Capacity (ton)

ELECTRIC CHAIN HOISTS (Model EMT MHL-5 0.5 ton to 5.0 ton)

The ingenious design makes Model EMT-MHL-5 remarkably short. The drawn-up dimension "G" of model EMT-MHL-5 is more than 30% shorter than the standard directcoupled Model EMT-MH-5. The extremely short drawn-up dimension "G" of model EMT-MH-5 makes it possible to obtain the last inch of lift that must be obtained in areas where space is extremely limited.

STRUCTURE

Model EMT-MHL-5 consists of an electric trolley, a plain trolley and an electric trolley that are connected with an arm. Two idler wheels that are located under the electric chain hoist and under the electric trolley direct the load chain so it exits from underneath the electric trolley.

APPLICATIONS

- Materials handling and installation of machinery in buildings with low ceilings.
- Materials handling inside of ships and other confined location.
- Maintenance work in electric power stations.

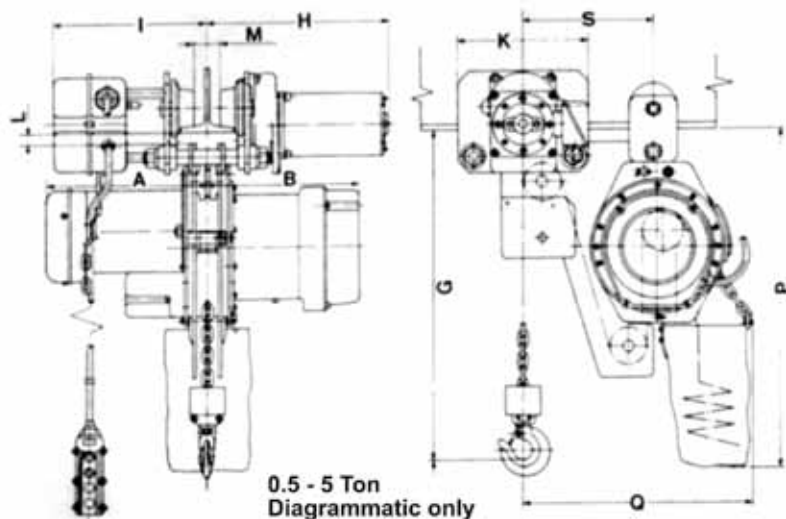
REMARKS

- The specifications shown in this catalog are for straight beams. The design and specifications for beams with curves are different.
- Dimension "W" can be lengthened. Consideration should be given to Dimension "R" and to the shape of the load when determining dimension "W".
- Lifting or pulling at an angle is not possible.
- Maximum lifts
0.5 ton 1.0 ton 17 meter, 2.0 ton 3.0 ton 8 meter, 5.0 ton 4 meter.

NOTES:

- a- Only the standard lifts hoists, are enumerated above. Please apply for extra long lifts.
- b- Please state power source voltage and Herz on enquiry and or ordering.
- c- 4-core coloured cords with rubber-covered power source cable is supplied, without plug.
- d- A chain collecting bucket is supplied with each hoist as standard attachment.
- e- With each hoist is packed a handbook giving comprehensive instructions for installation, and operation with an inspection certificate.
- f- The specifications marked * in the above table vary according to different lifts.

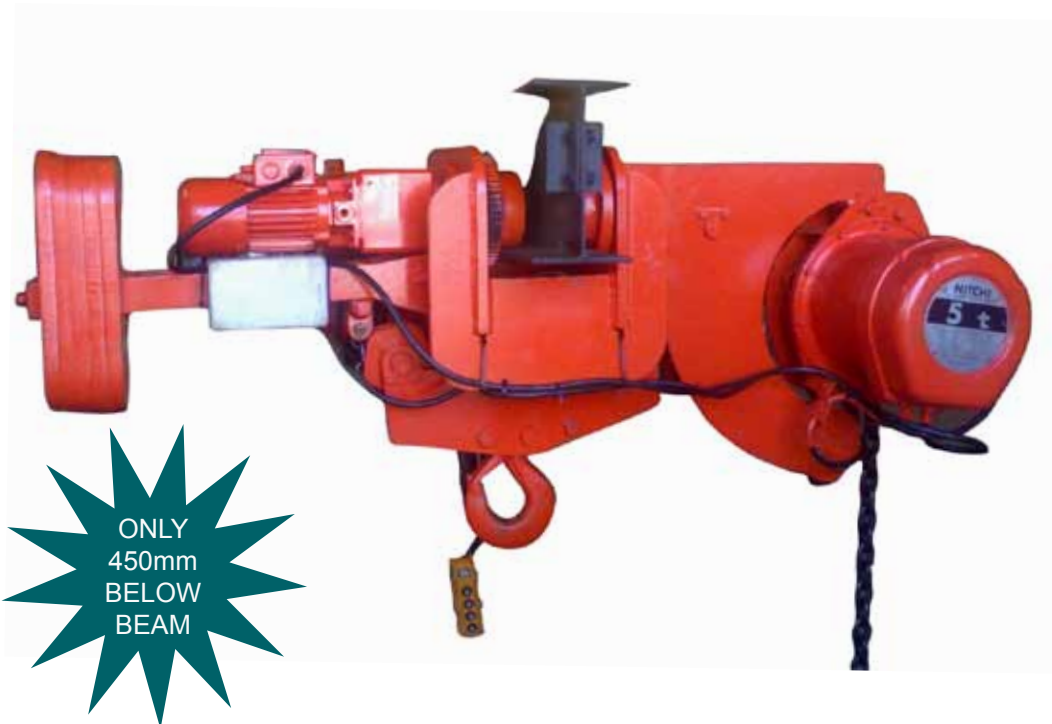
The design, materials and specifications are subject to change for improvements without notice.



0.5 - 5 Ton Diagrammatic only

MODEL EMT - MHUL - 5

ENGINEERING SUPPLIES
MOVING MATERIALS SAFELY



**TECHNICAL
SPECIFICATIONS OF
ULTRA LOW
HEADROOM HOIST**

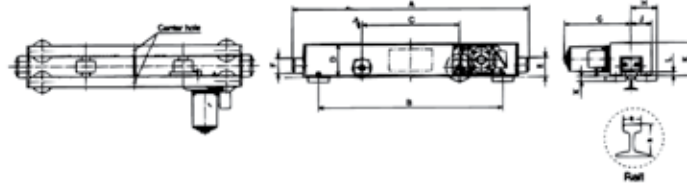
TYPE:	Ultra Low Headroom Battery Bay 5 Ton Electric Chain Hoist complete with Electric Trolley and Chain bag.
S.W.L:	5 Ton
VOLTAGE:	525 Volt or 380 volt
DRAWN UP DIMENSION:	Does not exceed 450mm
HOIST MOTOR:	2.5 kw with 40% ED duty cycle. Class B insulation with 30 min. rating.
HOIST GRADE:	Grade IV Heavy Duty
BRAKE SYSTEM:	DUAL INDEPENDENT BRAKE SYSTEM comprises: Electromagnetic brake and Mechanical brake Where each brake is capable of holding the rated load.
GEARBOX:	Contains first stage helical gearing.
LIFTING SPEED:	2.2 M/Min
LIFT:	3 Meters
HOOKS:	Drop forged carbon steel.
STANDARD FEATURES:	<ul style="list-style-type: none">i) Reverse phase protection relay.ii) Oil bath lubrication.iii) Over hoisting and over lowering protectioniv) Over load protection, self resetting as required by M.O.S. Act October 1993.-optionalv) Low voltage pendant.vi) Double fall of load chain.vii) Load chain is case hardened according to Specification JIS 0557 as follows:<ul style="list-style-type: none">a) Surface Hardness (HV): Over 600b) Total depth of carbonized, hardening 0.22 mm. Depth of hardening is more than 2% of link diameter.
TROLLEY SPEED:	10 M/Min.



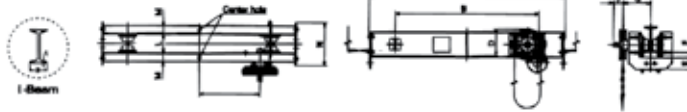
DETERMINING WHICH TYPE 4 END CARRIAGE TO USE:

- 1). The most appropriate End Carriage for your specific materials handlings application can be determined from the models, rated loads and spans listed in the table below.
- 2). Use the following formula to determine the maximum wheel load. Confirm that the calculated value is within the maximum wheel load of the End Carriage to be used. Always select End Carriage with a maximum wheel load sufficient for the crane:
- 3). The size of the crane girder can be determined with the following table:

Model EO4 Top Running Type



Model GL4 Suspension Type



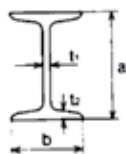
$$\text{Maximum wheel load (kg)} = \frac{\text{End Carriage weight (kg)} + \text{Girder weight (kg)}}{\text{Number of wheels}} + \frac{\text{Hoist weight (kg)} + \text{Rated load (kg)}}{\text{Number of wheels} \times \frac{1}{2}}$$

N.B. Top running type end carriages = 4 wheels
Suspension type end carriages = 8 wheels

I-Beam Dimensions & Maximum Spans (for Single Girder):

I-Beam		Rated load (t)						
axbxt1	net weight (kg/m)	0.5	1	2	3	5	8	10
125x 75x 5.5	16.1	3.6						
150x 100x 5.5	17.1	4.2	2.3					
180x 100x 6	23.6	6.4	4.0					
200x 100x 7	26.0	6.6	4.4	2.3				
250x 125x 7.5	38.3	9.8	7.2	4.4	3.0			
250x 125x 10	55.5	11.3	8.4	6.2	4.4	2.7		
300x 150x 8	48.3	12.5	9.4	6.4	4.4	—		
300x 150x 10	65.5		10.4	7.2	5.1	3.1		
300x 150x 11.5	76.8		11.3	7.3	5.2	3.2	2.0	1.6
350x 150x 9	58.5		11.3	8.1	5.7	3.5	—	—
350x 150x 12	87.2			10.1	8.5	5.4	3.4	2.8
400x 150x 10	72.0			10.1	7.4	4.6	2.9	—
400x 150x 12.5	95.8			11.7	9.6	6.3	4.0	3.2
450x 175x 11	91.7			12.3	10.3	6.7	4.3	3.5
450x 175x 13	115.0				11.8	8.4	5.5	4.4
600x 190x 13	133.0					10.8	7.1	5.8
600xx 190x 16	176.0						9.6	7.8

Values based on 1/800 deflection.



(Example)
Use I-beam 400X150X10 for a crane with a 2(t) rated load and a 10(m) span.

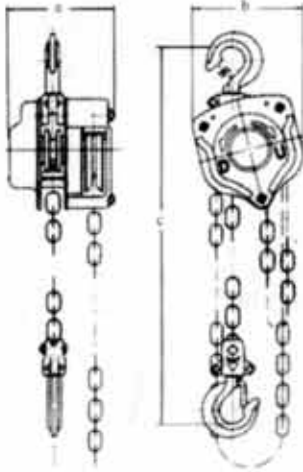
INDICATION PURPOSES ONLY

**Chain Blocks
500kg - 20 000kg**



Donsa

- A) The best value for money to ensure your safety.
- B) (3 stage testing) S.A. test certificate with each unit.
- C) Anti Slip Hooks
- D) Individually numbered to ensure traceability and accurate OSH act documentation.
- F) CSIR Tested certificates available on request.
- G) Safety traceability etc.
- H) Safety factor Min 4:1
- I) Double ratchet pawls fitted



1/2 - 2 ton



3 ton



5 ton



10 - 20 ton



MODEL NO	DN0.5	DN1	DN1.5	DN2	DN3	DN5	DN10	DN15	DN20
STANDARD LIFT	2.5m	2.5m	2.5m	3m	3m	3m	3.5m	3.5m	3.5m
LOAD CHAIN	6.3	6.3X19.1	7.1X21	7.9X23	7.1X21	9.0X27	9.0X27	9.0X27	9.0X27
HAND CHAIN	5.0X22.8	5.0X22.8	5.0X22.8	5.5X23.6	5.0X22.8	5.5X23.6	5.5X23.6	5.5X23.6	5.5X23.6
NET WEIGHT	11kg	11.5kg	13.6kg	21.6kg	23.0kg	41.0kg	76kg	150kg	190kg
MIN DISTANCE BETWEEN HOOKS	315mm	315mm	340mm	380mm	475mm	630mm	760mm	850mm	870mm
PULLING EFFORTS	24kg	33kg	34kg	34kg	35kg	39kg	41kg	41x2kg	41x2kg
a	150mm	147mm	147mm	179mm	147mm	173mm	175mm	207mm	202mm
b	154mm	157mm	174mm	204mm	206mm	263mm	367mm	754mm	873mm
c	315mm	315mm	340mm	380mm	475mm	635mm	760mm	850mm	870mm
TEST LOAD	750kg	1,500kg	2,300kg	3,000kg	4,750kg	6,300kg	12,500kg	20,000kg	25,000kg

The load chain length can be adjusted to suit your requirements