

NITCHI

CHAIN HOIST H-50A SERIES

available from 0.5 ton through 50 ton capacities

No.1



ISO 9001
ISO 14001
JQA-2734
JQA-EM1902



SANS 1594:2007

NITCHI Manual
Chain Hoist



ENGINEERING SUPPLIES
2016 710005 0000 00

HOISTS
SLINGS



& LIFTING
THINGS

www.engsup.co.za

 **NITCHI CO., LTD.**
OSAKA, JAPAN.

HEAVY-DUTY CHAIN HOIST H-50A (triple spur geared)

COMPACT & LIGHTWEIGHT

The latest technology, high quality materials together with ultra-modern equipment are employed to make the compact, lightweight, easy to use H-50A industrial type chain hoist with more than 4-times safety factor.

DURABILITY

H-50A is a top quality heavy-duty chain hoist that we supply with complete confidence for fulfilling the harsh and severe requirements of various industries. H-50A's robust design comes from large capacity chain hoists with multiple falls of load chain. The super-strong body results from the high precision of the pressed components.

LOAD SHEAVE

The ideal shaped pockets on the Load sheave ensures smooth and positive meshing with the Load chain. The Roller type chain guides securely hold the Load chain in position and accurately guide the Load chain into the pockets of the Load sheave.

REDUCTION GEARS

The longwearing reduction gears are precisely machined from specially selected materials, which are thermo-refined for maximum strength and durability. The smooth movements and exceptionally light pulling efforts of H-50A are the result of the precision of each component.

BEARINGS

Precision bearings have been used on the main rotating sections for extra smooth movement. The Pinion shaft is supported with carbon bushings (0.5 & 1 ton) and needle bearings (1.6 ton & larger) for increasing mechanical efficiency.

HAND CHAIN & SAFETY LINK

The Safety link and Hand chain are a size that fits snugly into the operator's hand for easy tireless operation. The Safety link connects the ends of the Hand chain to make an endless circle. The Safety link is also a safety device for protecting the chain hoist from excess burdens and unexpected large damaging forces that can arise when the Hand chain is accidentally caught by a moving vehicle.

SAFETY LATCH

The top and bottom hooks have pressed steel Safety latch assemblies to firmly hold the load securely in the hook pocket.

HANDWHEEL COVER

The Handwheel cover protects the Handwheel and Brake system. The large opening of the Handwheel cover enables the Hand chain to be operated smoothly.

DOUBLE COVER PROTECTION

2-independent covers protect the brake against rain and dust.

LOAD BRAKE

The ratchet type brake will positively hold the load. The pulling efforts to free the brake are exceptionally light with H-50A, and the brake will respond instantly and smoothly to the movements of the hand chain.

TWO INDEPENDENT PAWLS

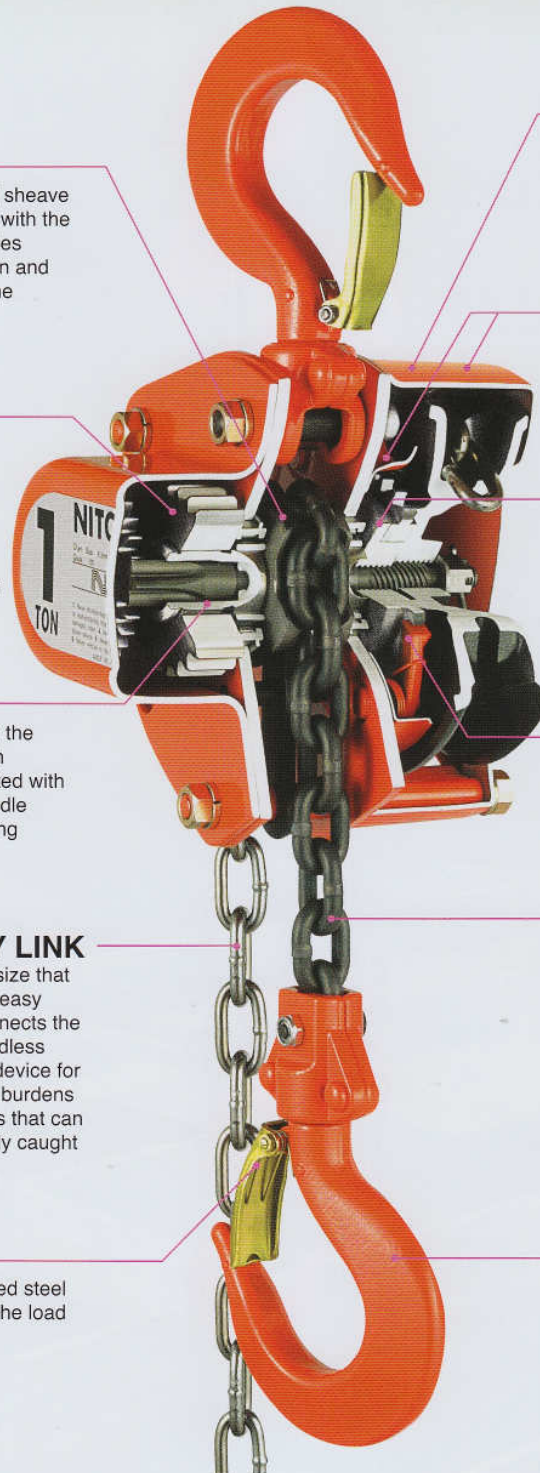
The 2-Pawls increase reliability and provide greater safety.

LOAD CHAIN

The high quality load chains of H-50A are the result of many years of development and our long experience in manufacturing materials handling equipment. The load chains are super-strong and have high elongation percentages. H-50A 1 ton and larger capacities have Grade-V (Grade 100) load chains and 0.5 ton has a Grade-T (Grade 80) load chain.

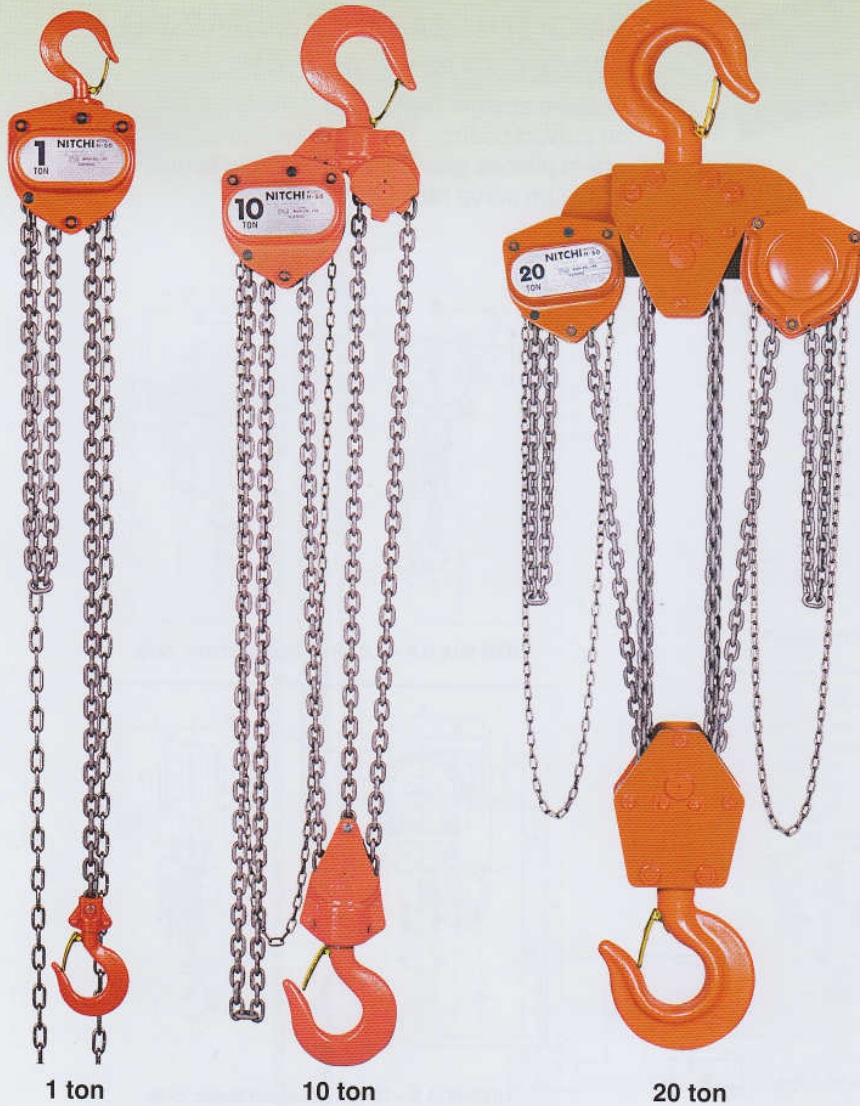
HOOK

The easy to use large mouth hooks are deep pocketed and swivel 360 degrees. The hook are made of high quality material, which are precision forged and precisely heat treated. The hooks of 5 ton and larger H-50A have thrust bearings for extra smooth rotation.



EASY SERVICING

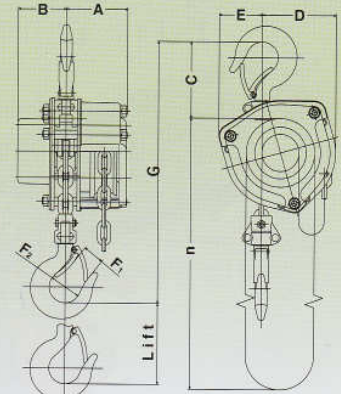
Wear and tear from prolong use is inevitable. When servicing becomes necessary all components of H-50A are replaceable.



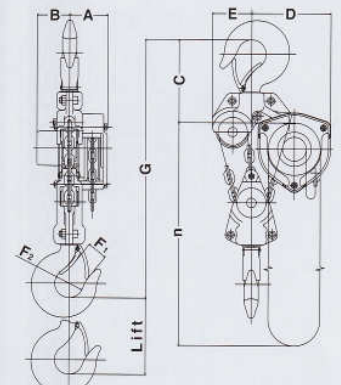
1 ton

10 ton

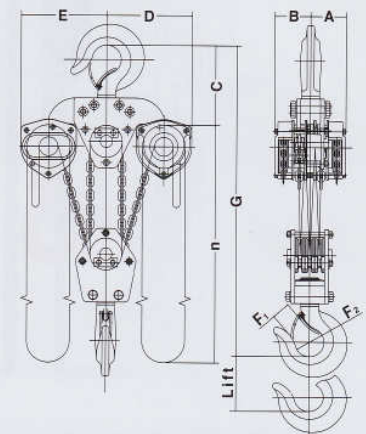
20 ton



0.5 - 3.2 ton Diagrammatic only



5 - 16 ton Diagrammatic only



20 ton or more Diagrammatic only

STANDARD SPECIFICATIONS: H-50A Chain Hoist

Item No.	Rated load (ton)	Lift (m)	Load chain		Head room G (mm)	Pulling efforts (N)	Net weight (kg)	Test load (ton)	Major Dimensions (mm)							
			Dia. (mm)	Nos. of falls					A	B	C	D	E	F ₁	F ₂	n(m)
HH5005A	0.5	2.5	5	1	260	206	8	0.75	82	56	100	90	48	24	36	2.5
HH5010A	1		6.3	1	300	235	10.5	1.5	84	66	110	100	59	29	43	2.5
HH5015A	1.6		7.1	1	345	289	15	2.4	91	77	120	115	69	33	48	2.5
HH5020A	2	3.0	7.9	1	380	329	21	3.0	99	88	125	132	82	35	52	3.0
HH5030A	3.2		10	1	435	373	30.5	4.8	106	94	140	160	94	40	60	3.0
HH5050A	5		7.1	3	575	353	35	7.5	91	77	200	205	94	47	68	3.1
HH5100A	10	3.5	10	3	790	422	76	12.5	106	94	260	283	122	68	95	3.8
HH5150A	16		10	5	1,040	461	155	20.0	106	94	350	340	212	75	105	4.0
HH5200A	20		10	6	1,080	441×2	250	25.0	153	153	345	390	390	79	125	4.0
HH5250A	25	3.5	10	8	1,100	431×2	≈320	31.3	183	183	345	390	390	79	125	4.0
HH5300A	32		10	10	1,470	461×2	≈440	40.0	213	213	435	400	400	95	135	4.3
HH5400A	40		10	14	1,700	451×2	≈650	50.0	255	255	530	400	400	105	165	4.6
HH5500A	50		10	20	1,820	461×2	≈850	62.5	328	328	590	400	400	115	180	4.6

N.B. 1. The table shows the standard lifts. Other chain lengths are also available.

The design, materials and specifications are subject to change for improvements without notice.

GENERAL-PURPOSE CHAIN HOIST HE-50A

(triple spur geared)

GENERAL-PURPOSE CHAIN HOIST

HE-50A is a well balanced all-round chain hoist with the same basic design as the H-50A industrial type chain hoist. For normal use most people will find the durability of HE-50A more than sufficient for their requirements.



1 ton

Excellent balance between cost and performance

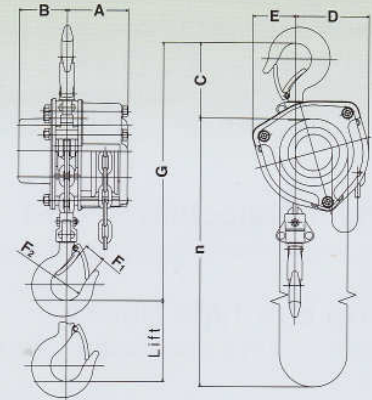
HE-50A is not a chain hoist that merely pursues low cost. It is a quality chain hoist that comes from the same strain as the heavy-duty H-50A industrial type chain hoist, which is renowned for its durability and operability. While proving the ultimate balance between low cost and high performance, HE-50A attaches greater importance to durability and operability.

HE-50A has been upgraded and now has 2-Pawls. The additional pawl increase reliability and safety.

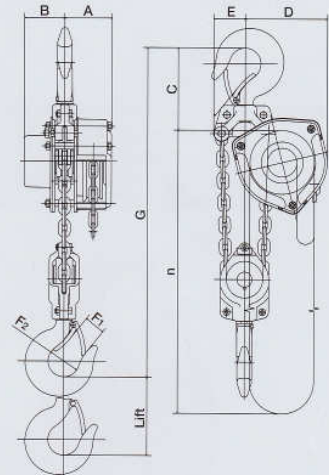
HE-50A product lineup has been complemented with the addition of 3.2 ton. HE-50A 3.2 ton was specially developed for fulfilling the request of many people. When compared to H-50A 3.2 ton the net weight is 8.5 kg lighter, which makes it much easier to transport and install.

LOAD CHAIN

The well balanced Grade T (Grade 80) load chains of HE-50A are the results of many years of development and our long experience in manufacturing materials handling equipment. These load chains have outstanding tensile strength and high elongation percentages.



0.5-2 ton Diagrammatic only



3.2 ton Diagrammatic only

STANDARD SPECIFICATIONS: HE-50A Chain Hoist

Item No.	Rated load (ton)	Lift (m)	Load chain		Head room G (mm)	Pulling efforts (N)	Net weight (kg)	Test load (ton)	Major Dimensions (mm)							
			Dia. (mm)	Nos. of falls					A	B	C	D	E	F1	F2	n(m)
HE5005A	0.5	2.5	5	1	260	245	8	0.75	82	56	100	90	48	24	36	2.5
HE5010A	1		6.3	1	300	265	10.5	1.5	84	66	110	100	59	29	43	2.5
HE5015A	1.6		7.1	1	345	324	15	2.4	91	77	120	115	69	33	48	2.5
HE5020A	2	3.0	7.9	1	380	392	21	3.0	99	88	125	132	82	35	52	3.0
HE5030A	3.2		7.1	2	530	353	22	4.8	91	77	160	160	60	40	60	3.0

N.B. 1. The table shows the standard lifts. Other chain lengths are also available.

The design, materials and specifications are subject to change for improvements without notice.