



HOFFMANN Fördertechnik
GmbH Wurzen





Innovative electric chain hoists – Milestones on the way to success



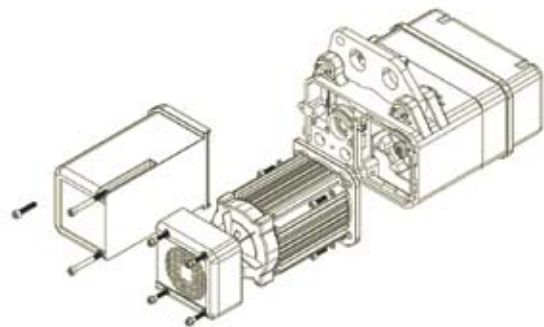
The initial design of the LIFTKET has shown the change to low headroom hoists by placing the motor and the gear on one horizontal level as the first electric chain hoist on the market. The LIFKET was the first chain hoist to introduce the special patented clutch-brake system with no chance of a load slip if the clutch is damaged or worn. The perfection of the STAR LIFKET clutch-brake system has no comparison around the globe today.



STAR LIFTKET – The generation of the 21st century

Special advantages

- High duty rate especially for areas with tropical climate
- Extremely maintenance free design with easy access to all wearing parts and changeability without need of special tools. This was achieved by following the module concept. Motor, oil filled and sealed gearbox and brake are replaceable and ready for operation without any adjustment. Only the clutch would have to be adjusted.
- Fan cooled hoisting motor with cooling ribs designed for the STAR LIFTKET gearbox contour
- Use of first class materials are to grant and increase the quality and liability for all the parts and the technology. This was achieved by performing a long term test procedure in our laboratories. The proofed life cycle of the parts exceeds the FEM requirements for the specific duty groups.
- Advanced safety by implementing of a new, patented clutch-brake system. This was achieved by further development of the idea well known from LIFTKET, which means not to have any sliding connections between load and brake. All clutch liners are asbestos free.
- Make a change from one chain fall to two or counter wise is very easy, fast and save (patented solution)
- Fixing of the 2nd chain fall with absolutely safe and easy handling (patented solution)
- Modern shape and design
- Compact and durable Aluminium gearbox with low weight



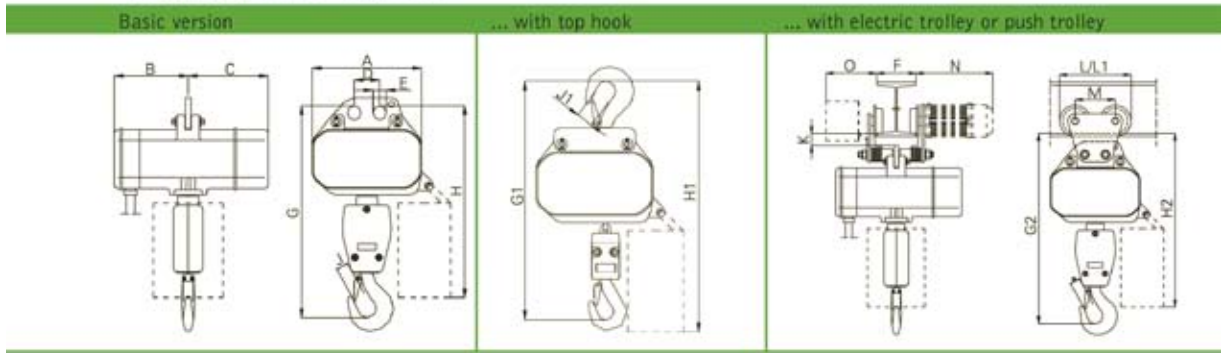


LIFTKET

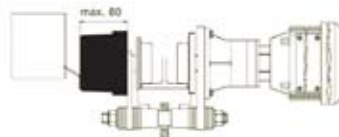
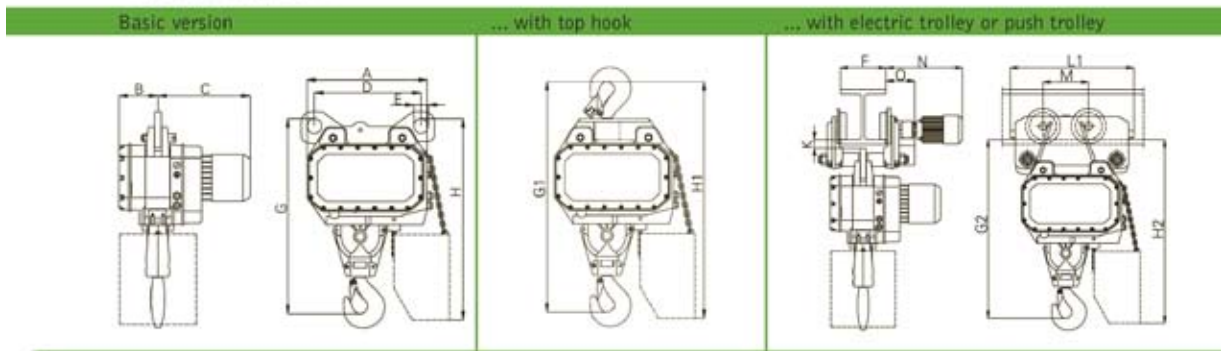
Three phase electric chain hoists

125 kg – 12500 kg

Version 1/00A –9.1/00S



Version 13/00X



Counter weights might be required for double speed trolleys for special combinations of load capacity, flange width and type of control (max. weight 9,4 kg).

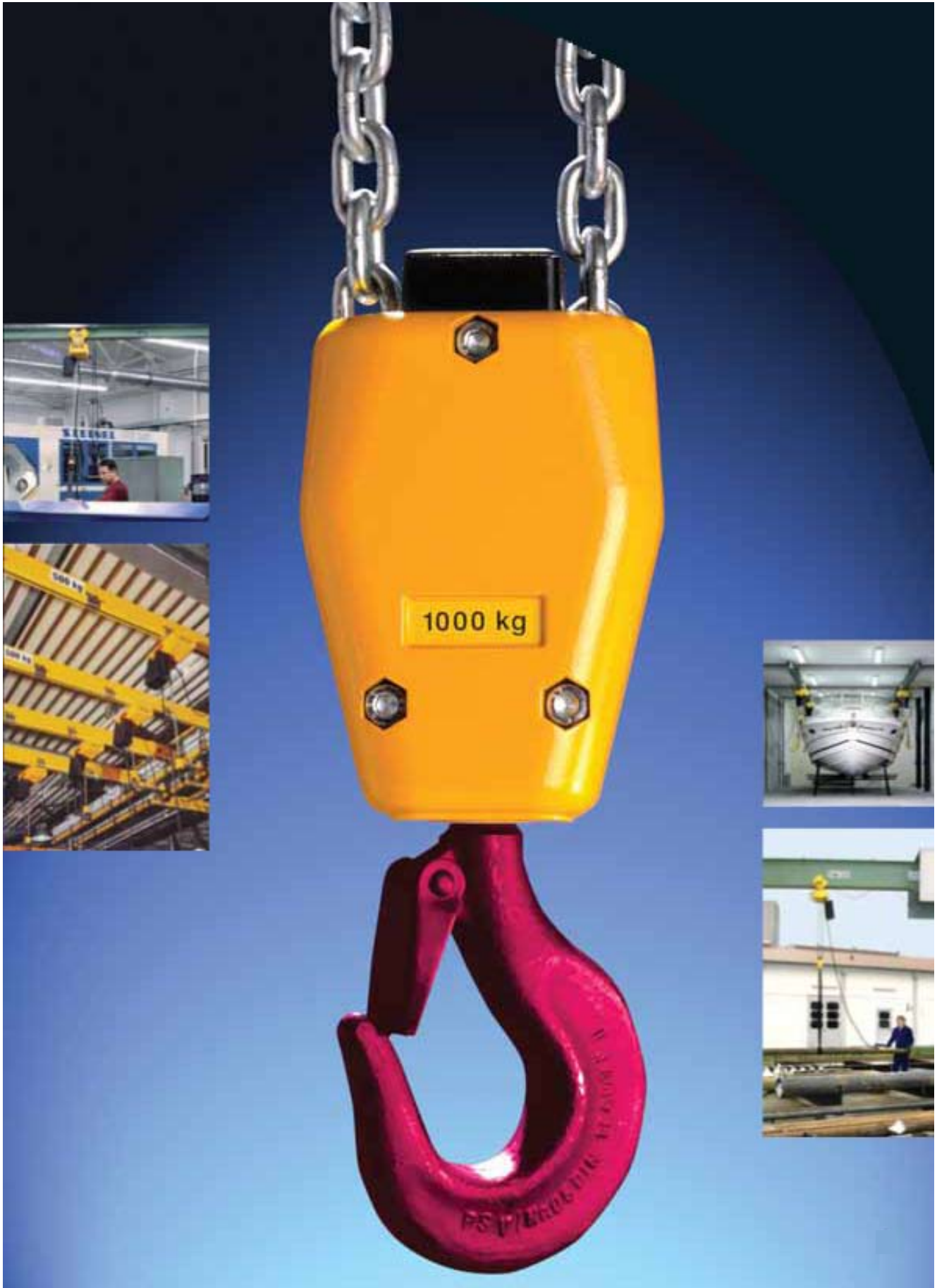
Curve radius	min. curve radius
up to 1000 kg	1.0 m
up to 3200 kg	1.5 m
up to 6300 kg	2.0 m

Remark: For model 13/00X a curve radius is not allowed.

Please note:

- Power supply 400 V, 3 ph, 50 Hz
- Protection class IP54 / Insulation class F
- Different voltage and frequency options available on request
- Hoist weight will increase by approximately 2 kg if low voltage control is required
- The hoist weight has been calculated for 3 m height of lift
- Control cable 1.5 m supplied as standard
- Height of lift 3.0 m supplied as standard
- Different heights of lift and control cable lengths available on request
- If heights of lift increases beyond 20 m, SWL (Safe Working Load) has to be reduced by the additional weight of the chain
- Low voltage control will be supplied as standard on version 8.1/9.1 and 13

The technical data mentioned in the tables are approximate and subjects to change.





Capacity	Version	Model	Lifting speed	Number of load chain	Duty group FEM 9.511	Dimension of load chain DIN 5684	Lifting motor	Duty rate starts/hour	A	B Direct control	B Low voltage control	C	D	E	G	G1	G2	H
kg			m/min			mm	kW	EDS/5h	mm	mm	mm	mm	mm	mm	mm	mm	mm	mm
125	125/1-8	1/00A	8	1	2m	4x12	0.18	40/240	188	167	230	145	58	27	345	424	391	369
150	150/1-24	2/53D	24	1	2m	5x15	1.1	40/240	260	199	246	200	58	27	385	464	431	496
250	250/2-4	1/00A	4	2	2m	4x12	0.18	40/240	188	167	230	145	58	27	372	451	418	369
	250/1-6	1.1/00B	6	1	18m	4x12	0.27	25/150	188	172	235	145	58	27	345	424	391	369
	250/1-8/2	3/00G	8.2	1	2m	5x15	0.6/0.1	60/25/240	260	199	246	200	58	27	385	464	431	496
	250/1-12	2/00D	12	1	2m	5x15	0.75	40/240	260	199	246	200	58	27	385	464	431	496
	250/1-16	2/50D	16	1	2m	5x15	1.1	40/240	260	199	246	200	58	27	385	464	431	496
	250/1-16/4	5/50I	16/4	1*	2m	5x15	1.1/0.2	40/10/240	260	199	246	245	58	30	385	464	445	501
300	300/2-12	2/53D	12	2	2m	5x15	1.1	40/240	260	199	246	200	58	27	438	517	484	496
500	500/2-3	1.1/00B	3	2	18m	4x12	0.27	25/150	188	172	235	145	58	27	372	451	418	369
	500/2-4/1	3/00G	4/1	2	2m	5x15	0.6/0.1	60/25/240	260	199	246	200	58	27	438	517	484	496
	500/2-6	2/00D	6	2	2m	5x15	0.75	40/240	260	199	246	200	58	27	438	517	484	496
	500/2-8	2/50D	8	2	2m	5x15	1.1	40/240	260	199	246	200	58	27	438	517	484	496
	500/1-10	4/00H	10	1	2m	7x22	0.84	40/240	260	199	246	200	58	30	403	496	455	501
	500/1-10/2.5	5/00I	10/2.5	1	2m	7x22	1.1/0.2	40/10/240	260	199	246	245	58	30	403	496	455	501
	1000	1000/2-5	4/00H	5	2	2m	7x22	0.84	40/240	260	199	246	200	58	30	496	589	548
	1000/1-5	4.1/00J	5	1	18m	7x22	0.84	25/150	260	213	260	200	58	30	403	496	455	501
	1000/2-5/1.25	5/00I	5/1.25	2	2m	7x22	1.1/0.2	40/10/240	260	199	246	245	58	30	496	589	548	501
	1000/1-5/1.25	5.1/00K	5/1.25	1	18m	7x22	1.1/0.2	25/10/150	260	213	260	245	58	30	403	496	455	501
	1000/1-6/1.5	7/00O	available as STAR LIFTKET	see page 9/10														
	1000/1-8	6/00L	available as STAR LIFTKET	see page 9/10														
	1000/1-10	4.2/00M	10	1	18m	7x22	2.2	25/150	260	213	260	245	58	30	403	496	455	501
	1000/1-10/2.5	7.2/00T	available as STAR LIFTKET	see page 9/10														
	1000/1-16	6/51L	available as STAR LIFTKET	see page 9/10														
1600	1600/1-10	6.1/00P	available as STAR LIFTKET	see page 9/10														
	1600/1-6/1.5	7.1/00N	available as STAR LIFTKET	see page 9/10														
2000	2000/2-2.5	4.1/00J	2.5	2	18m	7x22	0.84	25/150	260	213	260	200	58	30	496	589	548	501
	2000/2-2.5/0.6	5.1/00K	2.5/0.6	2	18m	7x22	1.1/0.2	25/10/150	260	213	260	245	58	30	496	589	548	501
	2000/2-3/0.75	7/00O	available as STAR LIFTKET	see page 9/10														
	2000/2-4	6/00L	available as STAR LIFTKET	see page 9/10														
	2000/2-5	4.2/00M	5	2	18m	7x22	2.2	25/150	260	213	260	245	58	30	496	589	548	501
	2000/2-5/1.25	7.2/00T	available as STAR LIFTKET	see page 9/10														
	2000/2-8	6/51L	available as STAR LIFTKET	see page 9/10														
2500	2500/1-4	8.2/50U	available as STAR LIFTKET	see page 9/10														
	2500/1-8	8.1/00R	available as STAR LIFTKET	see page 9/10														
	2500/1-8/2.5	9.1/00S	available as STAR LIFTKET	see page 9/10														
3200	3200/2-5	6.1/00P	available as STAR LIFTKET	see page 9/10														
	3200/2-3/0.75	7.1/00N	available as STAR LIFTKET	see page 9/10														
	3200/1-7	8.1/52R	available as STAR LIFTKET	see page 9/10														
4000	4000/1-5.6/1.4	13/00X	5.6/1.4	1	2m	16x45	6/1.3	60/40/240	564	184	184	434	500	66	823	995	903	957
5000	5000/2-2	8.2/50U	available as STAR LIFTKET	see page 9/10														
	5000/2-4	8.1/00R	available as STAR LIFTKET	see page 9/10														
	5000/2-4/1.25	9.1/00S	available as STAR LIFTKET	see page 9/10														
	5000/1-5.6/1.4	13/00X	5.6/1.4	1	1Am	16x45	6/1.3	60/40/180	564	184	184	434	500	66	823	995	903	957
6300	6300/1-5.6/1.4	13/00X	5.6/1.4	1	18m	16x45	6.4/1.6	60/40/150	564	184	184	434	500	66	823	995	903	957
	6300/2-3.5	8.1/52R	available as STAR LIFTKET	see page 9/10														
8000	8000/2-2.8/0.7	13/00X	2.8/0.7	2	2m	16x45	6/1.3	60/40/240	564	184	184	434	500	66	917	1089	997	957
10000	10000/2-2.8/0.7	13/00X	2.8/0.7	2	1Am	16x45	6.4/1.6	60/40/180	564	184	184	434	500	66	917	1089	997	957
12500	12500/2-2.8/0.7	13/00X	2.8/0.7	2	18m	16x45	6.4/1.6	60/40/150	564	184	184	434	500	66	917	1089	997	957

3 Phase Electric Chain Hoists
125kg - 12500kg

LIFTKET



	H1	H2	J	J1	Trisley type	F Flange width	Travelling speed	Travelling motor	K	L	L1	M	N (for travelling speed)	D (for low voltage control only)	Diameter of the wheels	Weights			
	mm	mm	mm	mm		mm	rpm/min	kW	mm	mm	mm	mm	mm (bracket)	mm	mm	LIFTKET-Basic version	Pull trolley	Electric trolley	
																kg	kg	kg	
	448	415	20	22	590											13			
	581	548	20	22	590											25			
	448	415	22	22	590	N	30-106									14			
	448	415	20	22	590	S1	110-200	16 or 25 or 5/20	0.12 0.12 0.04 0.18	33	200	216	112	220 (16 25) 275 (5/20)	142	70	8	13 (16 25) 18 (5/20)	
	581	548	20	22	590	S2	210-300									26			
	581	548	20	22	590											25			
	581	548	20	22	590											25			
	600	557	20	28	1090	N	66-135	16 or 25 or 5/20	0.12 0.12 0.04 0.18	38	200	216	112	220 (16 25) 275 (5/20)	146	70	10	13 (16 25) 18 (5/20)	
						S1	137-215			36						36			
						S2	220-300			34,5									
	581	548	22	22	590	N	50-106									27			
	448	415	22	22	590	S1	110-200	16 or 25 or 5/20	0.12 0.12 0.04 0.18	33	200	216	112	220 (16 25) 275 (5/20)	142	70	8	13 (16 25) 18 (5/20)	
	581	548	22	22	590	S2	210-300									28			
	581	548	22	22	590											27			
	581	548	22	22	590											27			
	600	557	22	28	1090	N	66-135	16 or 25 or 5/20	0.12 0.12 0.04 0.18	38	200	216	112	220 (16 25) 275 (5/20)	146	70	10	13 (16 25) 18 (5/20)	
	600	557	22	28	1090	S1	137-215			36						36			
	600	557	28	28	1090	S2	220-300			34,5						34			
	600	557	22	28	2090											31			
	600	557	28	28	1090											39			
	600	557	22	28	2090											37			
	600	557	22	28	2090														
	600	557	22	28	2090	N	66-135	16 or 25 or 5/20	0.12 0.12 0.04 0.18	38	200	216	112	220 (16 25) 275 (5/20)	146	70	10	13 (16 25) 18 (5/20)	
						S1	137-215			36						37			
						S2	220-300			34,5									
	600	557	28	28	2090	N	66-135	16 or 25 or 5/20	0.12 0.12 0.04 0.18	38	200	216	112	220 (16 25) 275 (5/20)	146	70	10	13 (16 25) 18 (5/20)	
	600	557	28	28	2090	S1	137-215			36						41			
						S2	220-300			34,5									
	1128	1036	52	52	12500	N	140-230	4/16	0.12 0.55	44	-	700	256	430 (4/16)	171	150	180	115	137 (4/16)
						S1	220-310												
	1128	1036	52	52	12500	N	140-230	4/16	0.12 0.55	44	-	700	256	430 (4/16)	171	150	180	115	137 (4/16)
	1128	1036	52	52	12500	S1	220-310												
	1128	1036	52	52	12500	N	140-230	4/16	0.12 0.55	44	-	700	256	430 (4/16)	171	150	199	115	137 (4/16)
	1128	1036	52	52	12500	S1	220-310												
	1128	1036	52	52	12500														

3 Phase Electric Chain Hoists

125kg - 12500kg



**ENGINEERING SUPPLIES
MOVING MATERIALS SAFELY**



Capacity	Version	SSA-Model	Lifting speed	Number of load coils	Duty group	Duty group load class	Dimensions of load chain DIN 5484-B	Lifting motor	Duty class motor/hoist	A	B	C	D	E	G	H1	H2	H	H1	H2	J	J1	Hoisting type
kg			m/min		FS 511	EN 818-7	mm	HP	IE3/IE4	mm	mm	mm	mm	mm	mm	mm	mm	mm	mm	mm	mm	mm	
125	125-1-4	02052	8	1	3m	2m	4x17	0.25	60240	212	192	218	58	27	354	432	401	464	547	516	20	22	500
	125-1-8.2	02103	8.2	1	3m	2m	4x17	0.330.08	60240	212	192	218	58	27	354	432	401	464	547	516	20	22	500
	125-1-24	02050	24	1	3m	18m	4x17	0.35	60240	212	192	218	58	27	354	432	401	464	547	516	20	22	500
160	160-1-4-1.3	02052	6.1.5	1	3m	2m	4x12	0.320.08	6025040	212	192	218	58	27	354	432	401	464	547	516	20	22	500
	250-2-4	02052	4	2	3m	2m	4x12	0.25	60240	212	192	218	58	27	354	432	401	464	547	516	20	22	500
	250-2-4.1	02103	4.1	2	3m	2m	4x12	0.320.08	6025040	212	192	218	58	27	354	432	401	464	547	516	20	22	500
	250-1-4	02050	4	1	3m	2m	4x12	0.35	60240	212	192	218	58	27	354	432	401	464	547	516	20	22	500
	250-1-8	02050	8	1	3m	18m	4x12	0.35	60240	212	192	218	58	27	354	432	401	464	547	516	20	22	500
	250-1-8.2	02103	8.2	1	3m	18m	4x12	0.320.08	6025040	212	192	218	58	27	354	432	401	464	547	516	20	22	500
	250-1-12	02050	12	1	3m	2m	4x12	0.35	60240	212	192	218	58	27	354	432	401	464	547	516	20	22	500
	250-1-12	02050	12	2	3m	18m	4x12	0.35	60240	212	192	218	58	27	354	432	401	464	547	516	20	22	500
	250-1-12.5	02103	12.5	1	3m	2m	4x12	0.68.1	6025040	212	192	218	58	27	354	432	401	464	547	516	20	22	500
	250-1-12.5	02103	12.5	2	3m	2m	4x12	0.68.1	6025040	212	192	218	58	27	354	432	401	464	547	516	20	22	500
320	320-1-8-1.5	02050	8	1	3m	2m	4x12	0.35	60240	212	192	218	58	27	354	432	401	464	547	516	20	22	500
	320-1-8-1.5	02103	8.1.5	1	3m	2m	4x12	0.68.1	6025040	212	192	218	58	27	354	432	401	464	547	516	20	22	500
	320-1-10	02050	10	1	18m	2m	4x12	0.55	60240	212	192	218	58	30	354	432	410	489	547	516	20	22	1000
400	400-1-10	02050	10	1	18m	18m	4x12	0.75	60240	212	192	218	58	30	390	462	446	509	582	545	20	22	1000
	400-1-10	02050	10	2	18m	18m	4x12	0.75	60240	212	192	218	58	30	390	462	446	509	582	545	20	22	1000
500	500-2-3	02050	3	2	3m	2m	4x12	0.55	60240	212	192	218	58	27	407	485	454	484	547	516	22	22	500
	500-2-4	02050	4	2	3m	18m	4x12	0.55	60240	212	192	218	58	27	407	485	454	484	547	516	22	22	500
	500-2-4.1	02103	4.1	2	3m	18m	4x12	0.320.08	6025040	212	192	218	58	27	407	485	454	484	547	516	22	22	500
	500-2-6	02050	6	2	3m	2m	4x12	0.85	60240	212	192	218	58	27	407	485	454	484	547	516	22	22	500
	500-2-6-1.5	02103	6.1.5	2	3m	2m	4x12	0.68.1	6025040	212	192	218	58	30	443	515	489	509	582	545	22	22	500
	500-1-8	02050	8	1	18m	18m	4x12	0.55	60240	212	192	218	58	30	354	432	418	489	547	516	20	22	1000
	500-1-8	02050	8	2	18m	18m	4x12	0.55	60240	212	192	218	58	30	354	432	418	489	547	516	20	22	1000
	500-1-8.2	02103	8.2	2	3m	2m	4x12	1.10.2	6025040	212	192	218	58	30	443	515	489	509	582	545	22	22	500
	500-1-10	02050	10	1	2m	2m	7.2x21	1.1	60240	212	192	218	58	30	404	492	468	511	599	547	22	28	1000
	500-1-10-2.5	02103	10.2.5	1	2m	2m	7.2x21	1.10.2	6025040	212	192	218	58	30	404	492	468	511	599	547	22	28	1000
630	630-2-5	02050	5	2	18m	2m	4x12	0.55	60240	212	192	218	58	30	407	485	463	484	547	516	22	22	1000
	630-1-10	02050	10	1	2m	2m	7.2x21	1.1	60240	212	192	218	58	30	404	492	468	511	599	547	22	28	1000
800	800-2-5	02050	5	2	18m	18m	4x12	0.75	60240	212	192	218	58	30	443	515	489	509	582	545	22	22	1000
	800-1-8	02050	8	1	2m	2m	7.2x21	1.1	60240	212	192	218	58	30	384	472	448	511	599	547	22	28	1000
1000	1000-2-4	02050	4	2	18m	18m	4x12	0.55	60240	212	192	218	58	30	407	485	465	484	547	516	22	22	1000
	1000-2-5	02050	5	2	2m	2m	7.2x21	1.1	60240	212	192	218	58	30	514	582	570	511	599	547	28	28	1000
	1000-2-5-1.5	02103	5.1.5	2	2m	2m	7.2x21	1.10.2	6025040	212	192	218	58	30	514	582	570	511	599	547	28	28	1000
	1000-1-8	02050	8	1	18m	18m	7.2x21	1.1	60240	212	192	218	58	30	404	492	468	511	599	547	22	28	1000
	1000-1-8-1.5	02103	8.1.5	1	18m	18m	7.2x21	1.10.2	6025040	212	192	218	58	30	404	492	468	511	599	547	22	28	1000
	1000-1-8	02050	8	1	3m	2m	9x27	2.2	60240	238	285	358	83	24	491	516	550	619	744	478	28	30	2000
	1000-1-8-2	02103	8.2	1	3m	2m	9x27	1.58.37	6025040	238	285	358	83	24	491	516	550	619	744	478	28	30	2000
	1000-1-10	02050	10	1	18m	18m	7.2x21	1.7	60240	212	192	218	58	30	404	492	468	511	599	547	22	28	1000
	1000-1-10	02050	10	1	3m	2m	9x27	2.2	60240	238	285	358	83	24	491	516	550	619	744	478	28	30	2000
	1000-1-10-2.5	02103	10.2.5	1	3m	2m	9x27	1.58.37	6025040	238	285	358	83	24	491	516	550	619	744	478	28	30	2000
1250	1250-2-5	02050	5	2	2m	2m	7.2x21	1.1	60240	212	192	218	58	30	514	582	570	511	599	547	28	28	1000
	1250-1-8	02050	8	1	18m	18m	7.2x21	1.7	60240	212	192	218	58	30	404	492	468	511	599	547	22	28	1000
1600	1600-2-4	02050	4	2	2m	2m	7.2x21	1.1	60240	212	192	218	58	30	514	582	570	511	599	547	28	28	1000
	1600-1-8	02050	8	1	2m	2m	9x27	2.2	60240	238	285	358	83	24	491	516	550	619	744	478	28	30	2000
	1600-1-10-2.5	02103	10.2.5	1	2m	2m	9x27	3.0.75	6025040	238	285	358	83	24	491	516	550	619	744	478	28	30	2000
	1600-1-12.5	02103	12.5	1	2m	18m	9x27	4.4/1.0	6025040	238	285	358	83	24	491	516	550	619	744	478	28	30	2000
2000	2000-2-3	02050	3	2	18m	18m	7.2x21	1.1	60240	212	192	218	58	30	514	582	570	511	599	547	28	28	1000
	2000-2-3-0.75	02103	3.0.75	2	18m	18m	7.2x21	1.10.2	6025040	212	192	218	58	30	514	582	570	511	599	547	28	28	1000
	2000-2-4	02050	4	2	2m	2m	9x27	2.2	60240	238	285	358	83	24	491	516	550	619	744	478	28	30	2000
	2000-2-4-1	02103	4.1	2	2m	2m	9x27	1.58.37	6025040	238	285	358	83	24	491	516	550	619	744	478	28	30	2000
	2000-2-5	02050	5	2	18m	18m	7.2x21	1.7	60240	21													

3 Phase Electric Chain Hoists 125kg - 12500kg



Flange width	Traveling speed	Traveling motor	H	L	L1	M	N	U	Diameter of the shafts	Weights		
										STAR LIFTKET Basic weight kg	Full only	Electric only
50-106 110-200 210-300	16 or 25 or 5/20	0.12 0.12 0.040.18	38	260	216	112	220 (16/25) 292 (5/20)	142	70	16	8	13 (16/25) 18 (5/20)
										16		
										15		
										33		
										36		
										37		
										37		
										36		
										36		
										33		
35												
17												
66-135 137-215 220-300	16 or 25 or 5/20	0.12 0.12 0.040.18	38 36 34.5	260	216	112	220 (16/25) 292 (5/20)	146	70	17	10	17 (16/25) 19 (5/20)
										33		
										33		
50-106 110-200 210-300	16 or 25 or 5/20	0.12 0.12 0.040.18	38	260	216	112	220 (16/25) 292 (5/20)	142	70	17	8	15 (16/25) 18 (5/20)
										35		
66-135 137-215 220-300	16 or 25 or 5/20	0.12 0.12 0.040.18	38 36	260	216	112	220 (16/25) 292 (5/20)	146	70	18	10	17 (16/25) 19 (5/20)
										34.5		
50-106 110-200 210-300	16 or 25 or 5/20	0.12 0.12 0.040.18	33	260	216	112	220 (16/25) 292 (5/20)	142	70	35	8	15 (16/25) 18 (5/20)
										36		
66-135 137-215 220-300	16 or 25 or 5/20	0.12 0.12 0.040.18	38 36 34.5	260	216	112	220 (16/25) 292 (5/20)	146	70	36	10	17 (16/25) 19 (5/20)
										42		
50-106 110-200 210-300	16 or 25 or 5/20	0.12 0.12 0.040.18	33	260	216	112	220 (16/25) 292 (5/20)	142	70	35	8	15 (16/25) 18 (5/20)
										36		
66-135 137-215 220-300	16 or 25 or 5/20	0.12 0.12 0.040.18	38 36 34.5	260	216	112	220 (16/25) 292 (5/20)	146	70	39	10	17 (16/25) 19 (5/20)
										36		
										35		
										36		
66-135 137-215 220-300	16 or 25 or 5/20	0.12 0.12 0.040.18	38 36 34.5	260	216	112	220 (16/25) 292 (5/20)	146	70	41	10	17 (16/25) 19 (5/20)
										47		
										36		
										42		
80-155 137-215 220-300	8 or 12 or 5/20	0.12 0.12 0.040.18	38.5 37 34.5	268.5	213.5	152.5	263 (8/12) 385 (5/20)	147	103	69	22	29 (8/12) 30 (5/20)
										67		
										67		
66-135 137-215 220-300	16 or 25 or 5/20	0.12 0.12 0.040.18	38 36 34.5	260	216	112	220 (16/25) 292 (5/20)	146	70	42	10	17 (16/25) 19 (5/20)
										41		
80-155 137-215 220-300	8 or 12 or 5/20	0.12 0.12 0.040.18	38.5 37 34.5	268.5	213.5	152.5	263 (8/12) 385 (5/20)	147	103	67	22	29 (8/12) 30 (5/20)
										67		
66-135 137-215 220-300	16 or 25 or 5/20	0.12 0.12 0.040.18	38 36 34.5	260	216	112	220 (16/25) 292 (5/20)	146	70	41	10	17 (16/25) 19 (5/20)
										42		
80-155 137-215 220-300	8 or 12 or 5/20	0.12 0.12 0.040.18	38.5 37 34.5	268.5	213.5	152.5	263 (8/12) 385 (5/20)	147	103	69	22	29 (8/12) 30 (5/20)
										88		
										103		
										103		
66-135 137-215 220-300	16 or 25 or 5/20	0.12 0.12 0.040.18	38 36 34.5	260	216	112	220 (16/25) 292 (5/20)	146	70	41	10	17 (16/25) 19 (5/20)
										47		
80-155 137-215 220-300	8 or 12 or 5/20	0.12 0.12 0.040.18	38.5 37 34.5	268.5	213.5	152.5	263 (8/12) 385 (5/20)	147	103	70	22	29 (8/12) 30 (5/20)
										77		
										77		
66-135 137-215 220-300	16 or 25 or 5/20	0.12 0.12 0.040.18	38 36 34.5	260	216	112	220 (16/25) 292 (5/20)	146	70	47	10	17 (16/25) 19 (5/20)
										47		
80-155 137-215 220-300	8 or 12 or 5/20	0.12 0.12 0.040.18	38.5 37 34.5	268.5	213.5	152.5	263 (8/12) 385 (5/20)	147	103	77	22	29 (8/12) 30 (5/20)
										47		
										47		
90-185 140-226 240-310	4/16	0.040.25	38 38 35.5	351	351	191	409 (4/16)	160	122	90	47	63 (4/16)
										110		
80-155 137-215 220-300	8 or 12 or 5/20	0.12 0.12 0.040.18	38.5 38 34.5	268.5	213.5	152.5	263 (8/12) 385 (5/20)	147	103	79	22	29 (8/12) 30 (5/20)
										80		
										113		
90-185 140-226 240-310	4/16	0.040.25	38 38 35.5	351	351	191	409 (4/16)	160	122	90	47	63 (4/16)
										110		
80-155 137-215 220-300	8 or 12 or 5/20	0.12 0.12 0.040.18	38.5 37 34.5	268.5	213.5	152.5	263 (8/12) 385 (5/20)	147	103	113	22	29 (8/12) 30 (5/20)
										107		
										130		
90-185 140-226 240-310	4/16	0.040.25	38 38 35.5	351	351	191	409 (4/16)	160	122	110	47	63 (4/16)
										107		
										130		
										130		



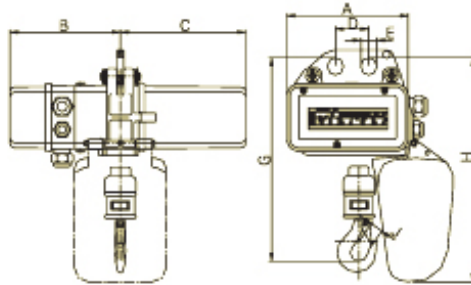
3 Phase Electric Chain Hoists

125kg - 6300kg

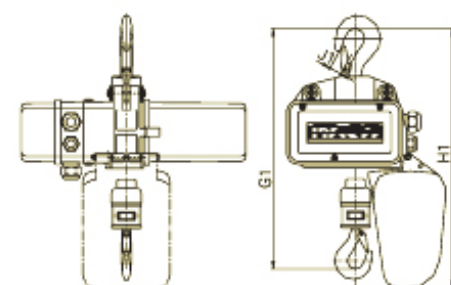
LIFTKET



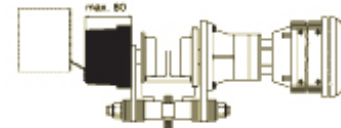
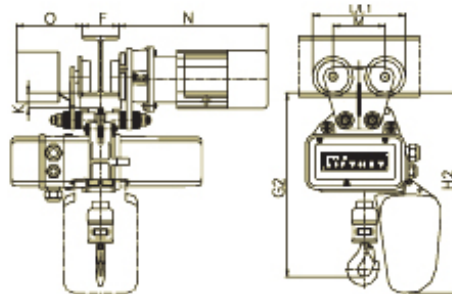
Basic version



... with top hook



... with electric trolley or push trolley



Curve radius	
Trolley capacity	min. curve radius
up to 1000 kg	1.0 m
up to 3200 kg	1.5 m
up to 6300 kg	2.0 m

Three phases electric chain hoists

125 kg – 6300 kg

Please note:

- Power supply 400 V, 3 ph, 50 Hz
 - Protection class IP55 / insulation class F
 - Different voltage and frequency options available on request
 - Hoist weight will increase by approximately 2 kg if low voltage control is required
 - The hoist weight has been calculated for 3 m heights of lift
 - Control cable 1.5 m supplied as standard
 - Height of lift 3.0 m supplied as standard
 - Different heights of lift and control cable lengths available on request
 - If heights of lift increases beyond 20 m, SWL (Safe Working Load) has to be reduced by the additional weight of the chain
 - STAR model 091/... (with 2 speeds) and 11... /... are equipped with 24 V low voltage control as standard
 - STAR model 090/... are equipped with low voltage control as standard, direct control on request
- The technical data mentioned in the tables are approximate and subjects to change.

Counter weights might be required for double speed trolleys for special combinations of load capacity, flange width and type of control (max. weight 9.4 kg).



Further options

The list of accessories available is quite extensive. All our hoists are available with either direct or low voltage control; many with encoders, electromechanical load sensor, double brakes and variable speed (frequency controls). These are only a few examples of the special accessories available.



STAR LIFTKET single phase electric chain hoists 125 kg – 2000 kg (detail drawings page 8)

Capacity kg	Version	STAR-Model	Lifting speed m/min	Numbers of load falls	Duty group hoist FEM 9.511	Duty group load chain EN 818-7	Dimension of load chain DIN 5684-8 mm	Lifting motor kW	Duty rate starts/hour ED%/S/h	A	B	C	D	E	G	G1	G2	H	H1
125	125/1-24	050/01	24	1	3m	2m	5.2x15	0.55	40/240	266	232	274	58	30	390	462	436	509	582
250	250/1-8	020/01	8	1	2m	18m	4x12	0.25	40/240	212	192	218	58	27	354	432	401	469	547
	250/2-12	050/01	12	2	3m	2m	5.2x15	0.55	40/240	266	232	274	58	30	443	515	489	509	582
500	500/2-4	020/01	4	2	2m	18m	4x12	0.25	40/240	212	192	218	58	27	407	485	454	469	547
	500/1-8	050/02	8	1	1Am	18m	5.2x15	0.55	40/240	266	232	274	58	30	390	462	436	509	582
	500/1-10	070/02	10	1	2m	2m	7.2x21	1.1	40/240	266	232	274	58	30	404	492	460	511	599
1000	1000/2-4	050/02	4	2	1Am	18m	5.2x15	0.55	40/240	266	232	274	58	30	443	515	489	509	582
	1000/2-5	070/02	5	2	2m	2m	7.2x21	1.1	40/240	266	232	274	58	30	514	582	570	511	599
	1000/1-6	070/01	6	1	1Am	18m	7.2x21	1.1	40/240	266	232	274	58	30	404	492	460	511	599
2000	2000/2-3	070/01	3	2	1Am	18m	7.2x21	1.1	40/240	266	232	274	58	30	514	582	570	511	599

All the advantages of the standard STAR LIFTKET chain hoists with single phase AC-motors are incorporated in the new model, the special safety clutch-brake system and the low head-room. These hoists are designed for building sites and places without a three phases power supply. Due to the excellent thermal performance of the motor a high duty rate and longer lifting heights are made possible. All single phase electric chain hoists require a minimum diameter of 2.5 sq. mm for the power and control cable for troublefree operation. The power supply cable should be as short as possible.



It's showtime!

LIFTKET special hoists Safety with VBG 70 standard



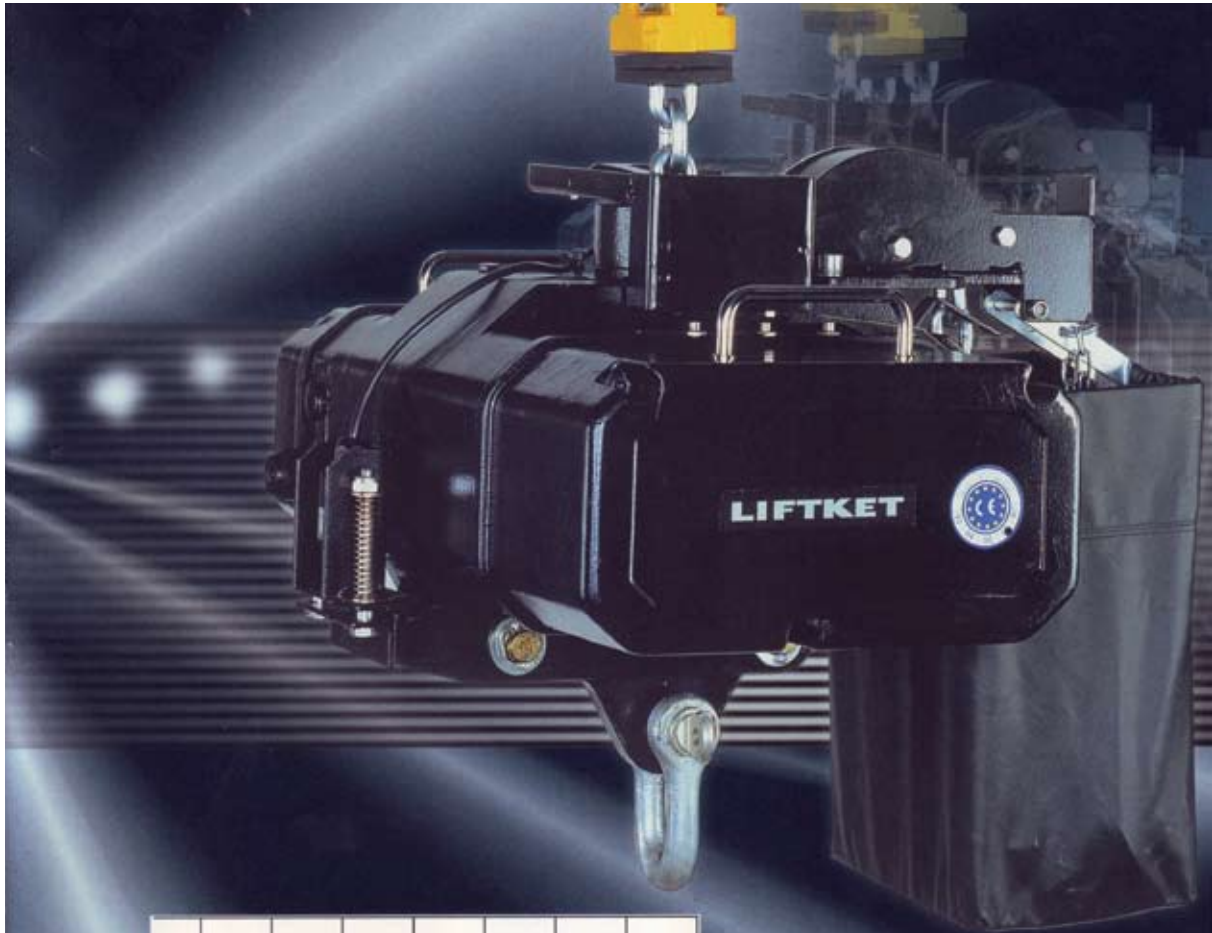
Stage technology has become very demanding throughout the world, in response to this in Swedish opera houses and discotheques, in London Millennium Dome, in many German discotheques, Town halls, Concert halls and Sports arenas such as Köln Arena of Cologne or in the most sophisticated discotheque of the African hemisphere in Capetown LIFTKET special hoists and computer controls are decisively involved to enjoy the auditors with creating breathtaking special effects.

The product range varies from systems suitable for simple rigging purposes up to lifting solutions certified according to the German VBG 70 standards.

The SB hoists with their double brake systems, limit switches for up and down operation and for up and down emergency, increased safety factors and many details available as an option provide a highest safety level for their operation whilst people are underneath.

Computer controls offered in a great variety of options up to variable speed and high accuracy of positioning being at the top of the range.





Capacity	Version	Lifting speed	Dimension of load chain DIN 5684-B	Lifting motor	Duty rate starts/hour	Weight of basic version	Headroom
kg		m/min	mm	kW	ED % 5h	kg	mm
250	MB 1.1	6	4 x 12	0,27	25/150	20	400
	MB 2	12	5 x 15	0,75	40/240	39	450
500	MB 4	10	7 x 22	0,84	40/240	49	495
1000	MB 4.2	10	7 x 22	2,20	25/150	51	495
	MB 4.3	4	7 x 22	0,75	25/150	51	495
1600	MB 6.1	10	9 x 27	3,00	25/150	96	595
2500	MB 8.2	4	11 x 31	2,20	25/150	126	740
	MB 8.3	8	11 x 31	3,60	25/150	126	740

Technical Data – MB-type

Standard rigging hoist according with the German/European VBG 8 standards

Capacity	Version	Lifting speed	Dimension of load chain DIN 5684-B	Lifting motor	Duty rate starts/hour	Weight of basic version	Headroom
kg		m/min	mm	kW	ED % 5h	kg	mm
125	SB 1.1	5	4 x 12	0,18	40/240	19	435
250	SB 2	8	5 x 15	0,75	40/240	38	500
500	SB 4.1	5	7 x 22	0,75	40/240	42	545
800	SB 6.1	5	9 x 27	0,22	40/240	81	640
1250	SB 8.2	4	11 x 31	2,20	40/240	96	735
	SB 8.3	8	11 x 31	3,00	40/240	96	735
3000	SB 13	5,6/1,4	16 x 45	3,80/0,85	40/240	195	930

Technical Data – SB - type

Hoists with increased safety according with the German/European VBG 70 standards

■ Lifting speeds and weights are guide numbers only.

■ The SB 1.1-type is available for use in normal suspension only because it's light weight.

With respects to print errors, technical modifications or changes of technical regulations.