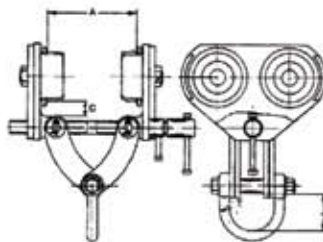
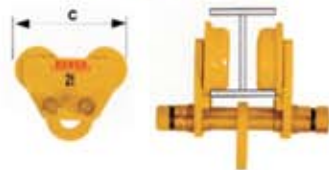
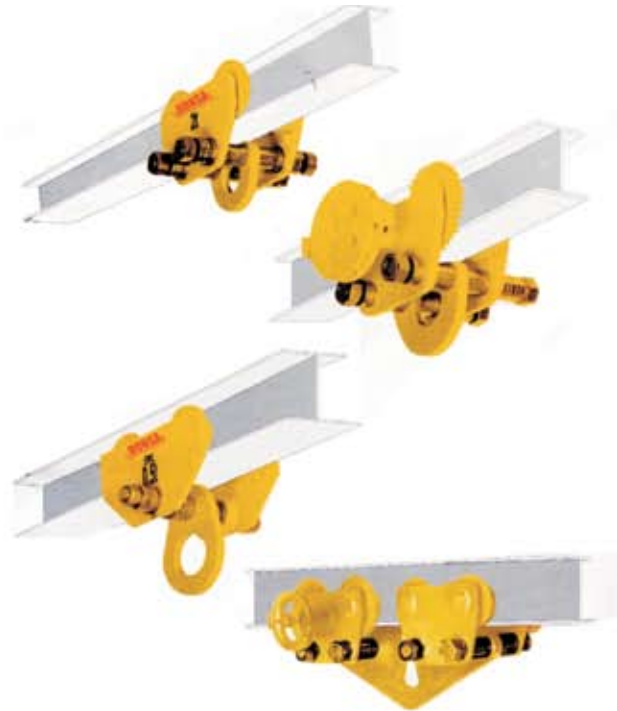
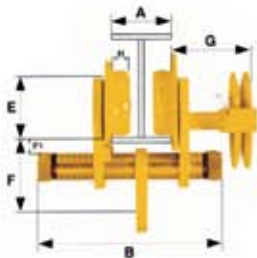


250 kg -20000 kg



Adjustable Trolleys

S.W.L CAPACITY	250 KG	500 KG	1T	2T	3T	5T	10T	15T/20T	
MODEL	DIMENSIONS mm								
"A" BEAM WIDTH RANGE	R1	50 - 70	50 - 75	76 - 140	90 - 153	100 - 166	126 - 166	154 - 192	154 - 192
	R2	76 - 143	76 - 143	141 - 210	154 - 216	167 - 210	167 - 210	193 - 229	193 - 229
	R3	-	-	211 - 305	217 - 305	211 - 305	211 - 305	230 - 305	230 - 305
"B" OVERALL CROSSHEAD WIDTH	R1	150	150	240	260	295	305	308	380
	R2	240	240	305	325	340	350	420	420
	R3	-	-	400	410	435	445	495	495
"C" OVERALL LENGTH GEARED PLAIN TROLLEY	146	178	210	265	315	414	934		
"D" OVERALL LENGTH GEARED CRAWL	-	-	240	295	295	340	454	974	
"E" RUNNER TREAD DIAMETER	45	55	55	90	90	110	145	145	
"F" HEADROOM-RUNNER TREAD TO SUSPENSION PLATE SEAT	105	108	80	89	114	114	238	258	
"F1" HEADROOM-RUNNER TREAD TO SPACER	12	15	22	21	24	22	73	58	
"G" EDGE OF RUNNER FLANGE TO OUTSIDE OF CHAIN WHEEL	-	-	135	138	138	144	230	230	
"H" TREAD WIDTH	18	18	19	25	25	30	48	48	
MINIMUM RADIUS OF TRACK CURVE (METER)	0.75	0.75	1.5	1.5	1.5	1.8	3.0	ON REQUEST ONLY	

Note: 250 kg + 500kg only available as push crawl with a single cross head bar accessories available on special order - 300mm extension for geared trolley
 - Anti- tip rollers
 - 15T/20T Connector / suspension plate

Adjustable Girder Clamp



MODEL GH

MODEL GS

MODEL	SWL (kg)	APERTURE		WIDTH W mm	HOLE C mm
		A mm	B mm max		
GS2	2000	75-250	200	85	
GS3	3000	100-320	255	95	
GS5	5000	100-365	300	100	
GS10	10000	200-500	350	165	
GH2	2000	75-250	200	85	52
GH3	3000	100-320	255	95	75
GH5	5000	100-365	300	100	75
GH10	10000	200-500	350	165	110

Monorail Construction Clamp



90° FIXED POSITION
MODEL FDE

MODEL	SWL (kg)
FDE 2	2000
FDE 3	3000
FDE 5	5000



ADJUSTABLE RADIAL
AND HEIGHT POSITION
MODE ADE

MODEL	SWL (kg)
ADE 2	2000
ADE 3	3000
ADE 5	5000



MODEL GS

Adjustable Rail Lifting Clamp - For all Rail Sizes



MODEL	SWL (KGS)	DIMENSIONS AS FOR MODELS GS/GH
R 3	3000	