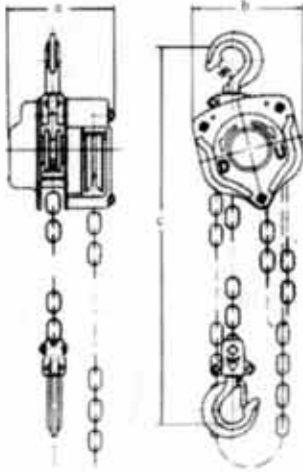


**Chain Blocks
500kg - 20 000kg**



Donsa

- A) The best value for money to ensure your safety.
- B) (3 stage testing) S.A. test certificate with each unit.
- C) Anti Slip Hooks
- D) Individually numbered to ensure traceability and accurate OSH act documentation.
- F) CSIR Tested certificates available on request.
- G) Safety traceability etc.
- H) Safety factor Min 4:1
- I) Double ratchet pawls fitted



1/2 - 2 ton



3 ton



5 ton



10 - 20 ton

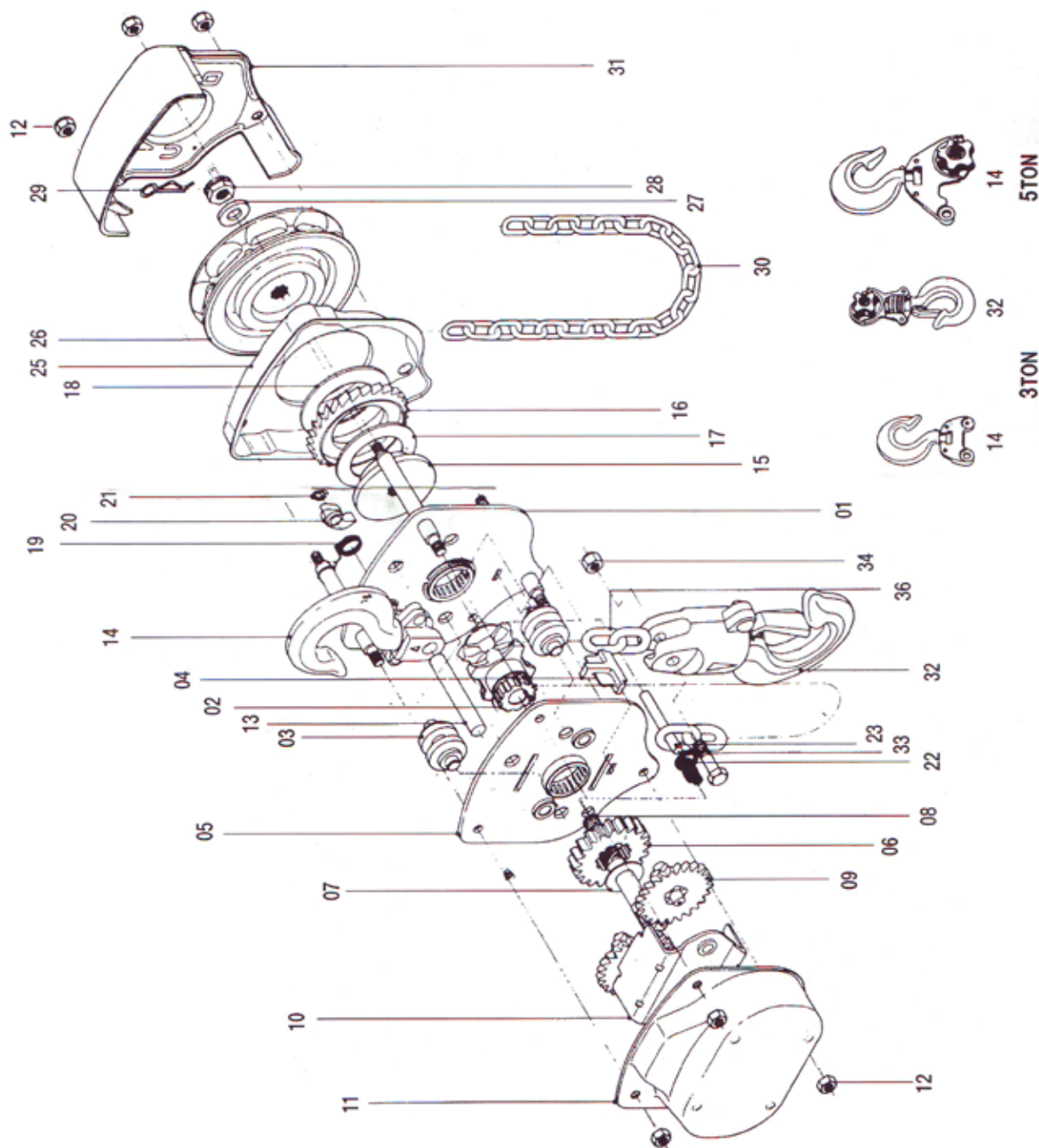


MODEL NO	DN0.5	DN1	DN1.5	DN2	DN3	DN5	DN10	DN15	DN20
STANDARD LIFT	2.5m	2.5m	2.5m	3m	3m	3m	3.5m	3.5m	3.5m
LOAD CHAIN	6.3	6.3X19.1	7.1X21	7.9X23	7.1X21	9.0X27	9.0X27	9.0X27	9.0X27
HAND CHAIN	5.0X22.8	5.0X22.8	5.0X22.8	5.5X23.6	5.0X22.8	5.5X23.6	5.5X23.6	5.5X23.6	5.5X23.6
NET WEIGHT	11kg	11.5kg	13.6kg	21.6kg	23.0kg	41.0kg	76kg	150kg	190kg
MIN DISTANCE BETWEEN HOOKS	315mm	315mm	340mm	380mm	475mm	630mm	760mm	850mm	870mm
PULLING EFFORTS	24kg	33kg	34kg	34kg	35kg	39kg	41kg	41x2kg	41x2kg
a	150mm	147mm	147mm	179mm	147mm	173mm	175mm	207mm	202mm
b	154mm	157mm	174mm	204mm	206mm	263mm	367mm	754mm	873mm
c	315mm	315mm	340mm	380mm	475mm	635mm	760mm	850mm	870mm
TEST LOAD	750kg	1,500kg	2,300kg	3,000kg	4,750kg	6,300kg	12,500kg	20,000kg	25,000kg

The load chain length can be adjusted to suit your requirements



ASSEMBLY



I



II



III



IV



V



VI





	NO	DESCRIPTION	Q'TY	1/2 ^T	1 ^T	1 1/2 ^T	3 ^T	5 ^T	2 ^T	10 ^T
I	01	SIDE PLATE 1								
	02	LOAD SHEAVE								
	03	GUIDE	2							
	04	STRIPER	1							
II	05	SIDE PLATE II	1							
	06	1ST GEAR	1							
	07	PINION WASHER	1							
	08	PINION SHAFT	1							
	09	2- 3rd GEAR	2							
III	10	SUPPORT PLATE	1							
	11	GEAR COVER	1							
	12	U - NUT	6							
IV	13	TOP HOOK PIN	1							
	14	TOP HOOK ASS' Y	1							
	15	HUB	1							
	16	RATCHET GEAR	1							
	17	DISC- A	1							
	18	DISC- B	1							
	19	PAWL SPRING	1							
	20	PAWL	1							
	21	SNAP RING	1							
	22	END SPRING	1							
	23	END PIN	1							
	24	ANCHOR- A	1							
V	25	BRAKE COVER	1							
	26	HAND WHEEL	1							
	27	WHEEL WASHER	1							
	28	PINION NUT	1							
	29	COTTOR PIN	1							
	30	HAND CHAIN	1							
VI	31	WHEEL COVER	1							
	32	BOTTOM HOOK ASS' Y	1							
	33	HOOK BOLT	1							
	34	V- NUT								
	35	ANCHOR- B								
	36	LOAD CHAIN								