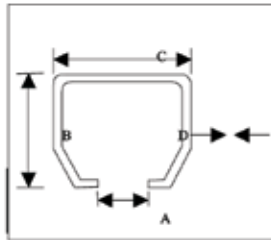


**LIGHT DUTY**

**3-CT-0100 – LD C-TRACK RAIL**

A	11
B	30
C	32
D	1.6
Weight = 1.55kg/m	
Supply lengths = 3m	

PERMISSIBLE AREA LOAD/m	SUPPORT SPACING	m					
		1	1.5	2	2.5	3	3.5
3-CT/0100	Kg	116	69	40	25	18	13



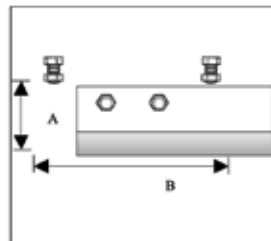
**HEAVY DUTY**

**3-BC-0100 – BIG C-TRACK RAIL**

A	14.5
B	36
C	41
D	2
Weight = 2.490kg/m	
Supply lengths = 4m	

**3-CT/0200 – LD JOINT SET**

Material Galvanized steel  
Weight 0.295kg  
Application To join rail sections  
A = 38  
B = 100

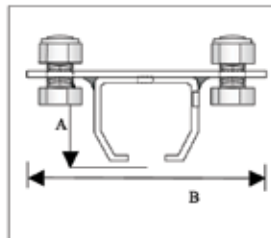


**3-BC/0200 – HD JOINT SET**

Material Galvanized steel  
Weight 1.26kg  
Application To join rail sections  
A = 43  
B = 125

**3-CT/0300 – LD RAIL SUPPORT**

Material Galvanized steel  
Weight 0.156kg  
Max load 63kg  
Application To support C-rails  
A = 32  
B = 80

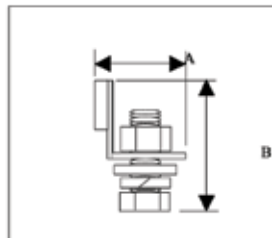


**3-BC/0300 – HD RAIL SUPPORT**

Material Galvanized steel  
Weight 0.49kg  
Max load 108kg  
Application To support C-rails  
A = 47  
B = 110

**3-CT/0400 – LD END STOP**

Material Galvanized steel  
Weight 0.044kg  
A = 20  
B = 32

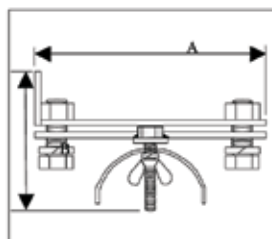


**3-BC/0400 – HD END STOP**

Material Galvanized steel  
Weight 0.150kg  
A = 113  
B = 43

**3-CT/0500 – LD END CLAMP**

Material Galvanized steel  
Weight 0.660kg  
A = 80  
B = 70



**3-BC/0500 – HD END CLAMP**

Material Galvanized steel  
Weight 0.530kg  
A = 90  
B = 120



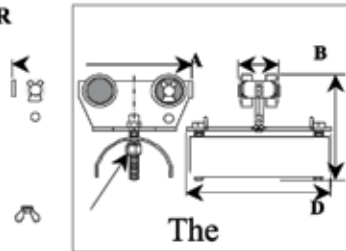
**LIGHT DUTY**

**3-CT-0600 – LD C-TRACK CARRIER**

Material 2mm galvanized steel  
Rollers Sealed ball bearings  
Cable width 68

Weight 0.490kg  
Max cable load 22kg/carrier

A = 85  
B = 25  
C = 67  
D = 95



**HEAVY DUTY**

**3-BC-0600 – HD C-TRACK CARRIER**

Material 5mm galvanized steel  
Rollers Sealed ball bearings

Weight 0.850kg  
C Max cable load 55kg/carrier

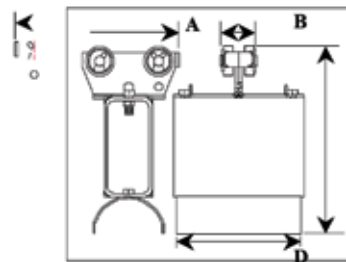
A = 105  
B = 34  
C = 115  
D = 120

**3-CT-0700 – LD MASTER CARRIER**

Material 2mm galvanized steel  
Rollers Sealed ball bearings

Weight 0.730kg

A = 85  
B = 25  
C = 143  
D = 95



**3-BC-0700 – MASTER CARRIER**

Material 5mm galvanized steel  
Rollers Sealed ball bearings

Weight 1.10kg

A = 102  
B = 32  
C = 125  
D = 120

\* Master box available separately

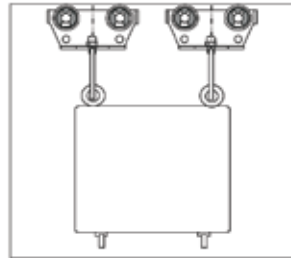
\* Master box available separately

**3-CT/0800 – LD MOBILE BOX**

Material Galvanized steel

Weight 2.3kg

Max load 44kg



**3-BC/0800 – HD MOBILE BOX**

Material Galvanized steel

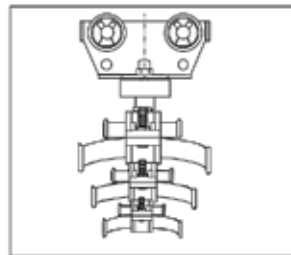
Weight 3.4kg

Max load 100kg

**3-CT/0611 – LD ROUND CABLE ASSEMBLY**

Material Galvanized steel

Weight 0.75kg



**3-BC/0611 – HD ROUND CABLE ASSEMBLY**

Material Galvanized steel

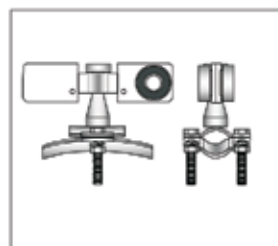
Weight 1.11kg

**3-CT/0612 – LS SWIVEL CARRIER**

Light duty, suitable for outdoor use

Material Galvanized steel  
Surface treatment Electroplated zinc

Cable capacity 24mm dia  
Max cable weight 30kg  
Length of carrier 100mm  
Ball bearing runners 22mm dia  
Loop depth 1m 1,25m 1.50m



**3-CT/0612 – HS SWIVEL CARRIER**

Medium duty, suitable for outdoor use

Material Galvanized steel  
Surface treatment Electroplated zinc

Cable capacity 50mm dia  
Max cable weight 60kg  
Length of carrier 100mm  
Ball bearing runners 28mm dia  
Loop depth 1m 1,25m 1.50m

**Notes**

1. It is recommended to use strain relief rope/chain between the carriers to prevent damage to the cables. For support brackets, see page 29.
2. When designing a festoon system, the ambush area/parking area must be taken into account.
3. C-track systems are also available in Stainless Steel