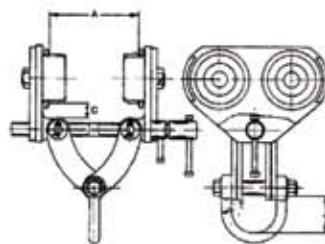
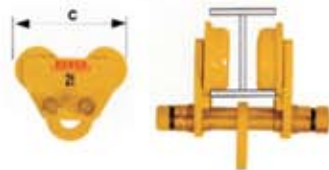
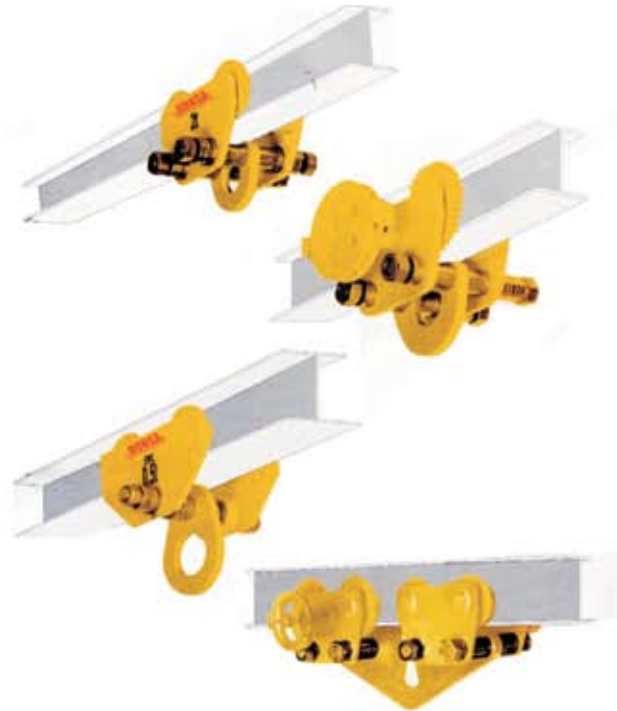
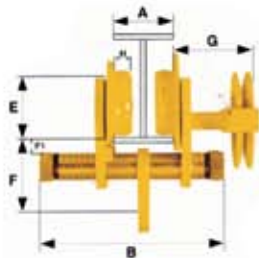


250 kg -20000 kg



Adjustable Trolleys

S.W.L CAPACITY	250 KG	500 KG	1T	2T	3T	5T	10T	15T/20T	
MODEL	DIMENSIONS mm								
*A' BEAM WIDTH RANGE	R1	50 - 70	50 - 75	76 - 140	90 - 153	100 - 166	126 - 166	154 - 192	154 - 192
	R2	76 - 143	76 - 143	141 - 210	154 - 216	167 - 210	167 - 210	193 - 229	193 - 229
	R3	-	-	211 - 305	217 - 305	211 - 305	211 - 305	230 - 305	230 - 305
*B' OVERALL CROSSHEAD WIDTH	R1	150	150	240	260	295	305	308	380
	R2	240	240	305	325	340	350	420	420
	R3	-	-	400	410	435	445	495	495
*C' OVERALL LENGTH GEARED PLAIN TROLLEY	146	178	210	265	315	414	934		
*D' OVERALL LENGTH GEARED CRAWL	-	-	240	295	295	340	454	974	
*E' RUNNER TREAD DIAMETER	45	55	55	90	90	110	145	145	
*F' HEADROOM-RUNNER TREAD TO SUSPENSION PLATE SEAT	105	108	80	89	114	114	238	258	
*F1' HEADROOM-RUNNER TREAD TO SPACER	12	15	22	21	24	22	73	58	
*G' EDGE OF RUNNER FLANGE TO OUTSIDE OF CHAIN WHEEL	-	-	135	138	138	144	230	230	
*H' TREAD WIDTH	18	18	19	25	25	30	48	48	
MINIMUM RADIUS OF TRACK CURVE (METER)	0.75	0.75	1.5	1.5	1.5	1.8	3.0	ON REQUEST ONLY	

Note: 250 kg + 500kg only available as push crawl with a single cross head bar accessories available on special order - 300mm extension for geared trolley
 - Anti- tip rollers
 - 15T/20T Connector / suspension plate

Adjustable Girder Clamp



MODEL GH

MODEL GS

MODEL	SWL (kg)	APERTURE		WIDTH W mm	HOLE C mm
		A mm	B mm max		
GS2	2000	75-250	200	85	
GS3	3000	100-320	255	95	
GS5	5000	100-365	300	100	
GS10	10000	200-500	350	165	
GH2	2000	75-250	200	85	52
GH3	3000	100-320	255	95	75
GH5	5000	100-365	300	100	75
GH10	10000	200-500	350	165	110

Monorail Construction Clamp



90° FIXED POSITION
MODEL FDE

MODEL	SWL (kg)
FDE 2	2000
FDE 3	3000
FDE 5	5000



ADJUSTABLE RADIAL
AND HEIGHT POSITION
MODE ADE

MODEL	SWL (kg)
ADE 2	2000
ADE 3	3000
ADE 5	5000



MODEL GS

Adjustable Rail Lifting Clamp - For all Rail Sizes



MODEL	SWL (KGS)	DIMENSIONS AS FOR MODELS GS/GH
R 3	3000	