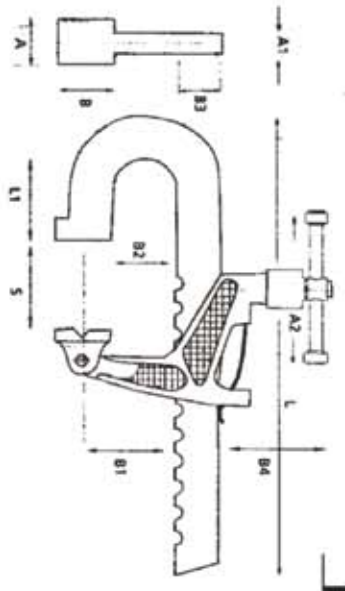




FOR TOUGH JOBS IN ENGINEERING INCLUDING

- Fabrication
 - Welding
 - Machining
 - Maintenance
 - Toolroom
- Spring-loaded jaw stays in position when pressure is removed.
 - Jaw moves to security clamp angle surfaces.
 - Working parts not exposed to weld spatter.
 - No long screws to bend.
 - Tightening action cannot rotate workpiece.



	Model No	Capacity (S)	Reach (B1)	Overall length	Weight kg
		mm Inch	mm Inch	mm Inch	
Standard Duty	T186-150	150 6	60 (2 1/4)	245 (9 1/2)	1.4
	T186-300	300 12	60 (2 1/4)	395 (15 1/2)	1.8
	T186-500	500 20	60 (2 1/4)	640 (25 1/4)	2.5
	T186-750	750 30	60 (2 1/4)	890 (35 1/4)	3.2
Standard Duty Long Reach	T321-250	250 10	120 (4 3/4)	360 (14 1/4)	2.0
	T321-600	600 24	120 (4 3/4)	715 (28 1/4)	3.5
Medium Duty	T290-225	225 9	90 (3 1/2)	420 (16 1/2)	5.5
	T290-450	450 18	90 (3 1/2)	655 (25 3/4)	7.0
	T290-750	750 30	90 (3 1/2)	959 (37 3/4)	8.5
	T290-1000	1000 40	90 (3 1/2)	1216 (47 1/4)	10.5
Medium Duty long Reach	T285-225	225 9	200 (8)	420 (16 1/2)	7.1
	T285-450	450 18	200 (8)	655 (25 3/4)	8.5
	T285-750	750 30	200 (8)	959 (37 3/4)	10.0
	T285-1000	1000 40	200 (8)	1216 (47 1/4)	11.5
Heavy Duty	T257-150	150 6	115 4 1/2	403 (15 1/2)	9.8
	T257-300	300 12	115 4 1/2	555 (21 1/2)	10.9
	T257-450	450 18	115 4 1/2	710 (27 1/2)	12.2
	T257-600	600 24	115 4 1/2	850 (33 1/2)	13.1
	T257-900	900 36	115 4 1/2	1165 (45 1/2)	15.8
	T257-1350	1350 54	115 4 1/2	1615 (63 1/2)	19.1

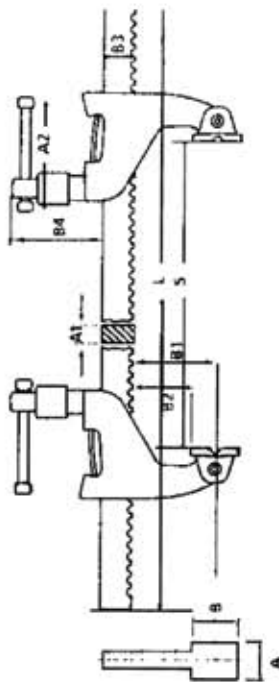
Model No. Model No.	Measurements in mm								
	A	A1	A2	B	B2	B3	B4	L	L1
T186-150	25	13	76	32	43	33	76	245	20
T186-300	25	13	76	32	43	33	76	395	20
T186-500	25	13	76	32	43	30	76	625	20
T186-750	25	13	76	32	43	30	76	875	30
T321-250	25	13	76	35	102	33,5	76	360	25
T321-600	25	13	76	32	98	30	76	715	8
T290-225	40	20	140	60	65	40	105	420	65
T290-450	40	20	140	60	65	40	105	655	65
T290-750	40	20	140	60	65	40	105	955	65
T290-1000	40	20	140	60	65	40	105	1205	65
T285-225	40	20	140	60	180	40	105	420	65
T285-450	40	20	140	60	180	40	105	655	65
T285-750	40	20	140	60	180	40	105	955	65
T285-1000	40	20	140	60	180	40	105	1205	65
T257-150	51	22	187	60	85	51	127	403	100
T257-300	51	22	187	60	85	51	127	555	100
T257-450	51	22	187	60	85	51	127	710	100
T257-600	51	22	187	60	85	51	127	850	100
T257-900	51	22	187	60	85	51	127	1165	100
T257-1350	51	22	187	60	85	51	127	1615	100

1 daN = 1kgf
 1 daN = 2.2lbf
 1 daN = 10 N



FOR TOUGH JOBS IN ENGINEERING INCLUDING

- Fabrication
- Welding
- Machining
- Maintenance
- Toolroom
- Spring-loaded jaw stays in position when pressure is removed.
- Jaw moves to security clamp angle surfaces.
- Working parts not exposed to weld spatter.
- No long screws to bend.
- Tightening action cannot rotate workpiece.



Optional Extras
Bar connectors
Bar connecting boxes for extra length bar clamps

T285 connector for medium duty T290 and/or T285 series clamps 1.3KG



T186 connector for standard duty T186 and or T321 series clamp 0.7KG

	Model No	Capacity (S) mm inch	Reach (B1) mm inch	Weight kg
Standard Duty	T186-600	600 24	60 (2 1/4)	3.4
	T186-900	900 36	60 (2 1/4)	4.4
	T186-1500	1500 60	60 (2 1/4)	5.8
	T186-2100	2100 84	60 (2 1/4)	7.6
	T186-2400	2400 96	60 (2 1/4)	8.8
Standard Duty Long Reach	T321-600	600 24	120 (4 1/2)	3.5
	T321-900	1200 36	120 (4 1/2)	4.5
	T321-1500	1500 60	120 (4 1/2)	5.9
	T321-2100	2100 84	120 (4 1/2)	7.7
	T321-2400	2400 96	120 (4 1/2)	8.9
Medium Duty	T290-900	900 36	90 (3 1/2)	10.5
	T290-1200	1200 48	90 (3 1/2)	12.1
	T290-1500	1500 60	90 (3 1/2)	14.0
	T290-2100	2100 84	90 (3 1/2)	18.0
Medium Duty long Reach	T285-900	900 36	200 (8)	11.5
	T285-1200	1200 48	200 (8)	13.0
	T285-1500	1500 60	200 (8)	15.0
	T285-2100	2100 84	200 (8)	19.0
Heavy Duty	T257-2100	2100 84	115 (4 1/2)	27.5
	T257-2700	2700 108	115 (4 1/2)	32.0

Model No.	Measurements in mm							
	A	A1	A2	B	B2	B3	B4	L
T186-600	25	12	76	32	44	30	76	710
T186-900	25	12	76	32	44	30	76	1020
T186-1500	25	12	76	32	44	30	76	1625
T186-2100	25	12	76	32	44	30	76	2235
T186-2400	25	12	76	32	44	30	76	2540
T321-600	25	12	76	32	104	30	76	710
T321-900	25	12	76	32	104	30	76	1020
T321-1500	25	12	76	32	104	30	76	1625
T321-2100	25	12	76	32	104	30	76	2235
T321-2400	25	12	76	32	104	30	76	2540
T290-900	38	20	140	51	65	40	105	1070
T290-1200	38	20	140	51	65	40	105	1390
T290-1500	38	20	140	51	65	40	105	1690
T290-2100	38	20	140	51	65	40	105	2290
T285-900	38	20	140	51	180	40	105	1070
T285-1200	38	20	140	51	180	40	105	1390
T285-1500	38	20	140	51	180	40	105	1690
T285-2100	38	20	140	51	180	40	105	2290
T257-2100	51	22	187	63.5	83	52	127	2335
T257-2700	51	22	187	63.5	83	52	127	2945



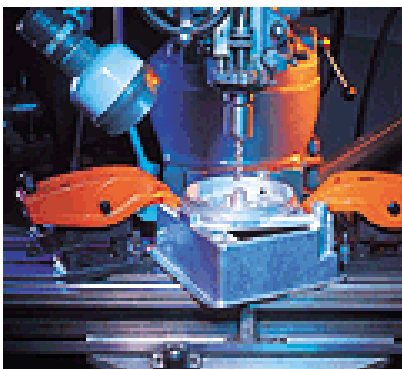
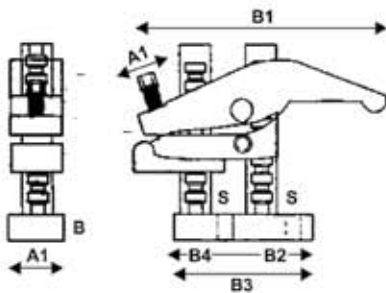
HOLDS WORK SECURELY ON MANY MACHINES, INCLUDING

Horizontal and vertical boring machines, including.

- Planers
 - Millers
 - Lathes
 - Power presses
 - Radial drills.
- Quicker, more efficient and safer than using packers and bolts-no loose pieces.
 - Can be used at any angle.
 - Head creates a "push" action when reversed.
 - Alternative positions for fulcrum pin.



1 daN = 1kgf
1 daN = 2.2lbf
1 daN = 10 N





	Model No	Clamping height		Reach		Weight KG
		Min mm	Max mm	Max mm	Max mm	
Standard Duty	T400-100	25	100	19	(1 1/2)	2.3
	T400-150	25	150			
	T400-200	62	200			
Standard Duty Long Reach	T600-100	12	100	57	(2 1/4)	2.7
	T600-150	12	150			
	T400-200	50	200			
Heavy Duty	T402-150	0	150	44	(1 1/2)	6.3
	T402-300	0	300			
	T402-450	150	450			
	T402-600	300	600			
	T402-750	450	750			
	T402-900	600	900			
	T402-1050	750	1050			
	T402-1200	900	1200			
	T402-1350	1050	1350			
	T402-1500	1200	1500			
Heavy Duty	T602-150	0	150	95	(3 1/4)	7.3
	T602-300	0	300			
	T602-450	150	450			
	T602-600	300	600			
	T602-750	450	750			
	T602-900	600	900			
	T602-1050	750	1050			
	T602-1200	900	1200			
	T602-1350	1050	1350			
	T602-1500	1200	1500			

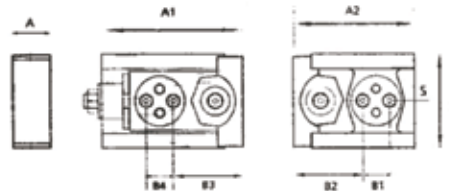
Model No.	Measurements in mm							S
	A	A1	B	B1	B2	B3	B4	
Standard duty T400 Series	51	13 A1 max	16	162	54	96.25	31.75	For M12 bolt
Standard duty long reach T600 Series	51	13 A1 max	16	200	54	96.25	31.75	For M12 bolt
Heavy duty T405 Series	76	19 A1 max	19	249	71	140	54	For M16 bolt
Heavy duty long long reach T602 Series	76	19 A1 max	19	308	71	140	54	For M16 bolt

**EFFORTLESSLY HANDLES
WORK WHERE
CONVENTIONAL VICES
CANNOT**

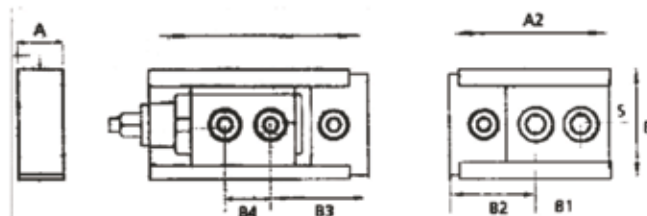
- Milling
- Grinding
- General surface operations.
- Operates in two planes:
- Horizontal-jaws tighten on work
- Vertical-bringing work firmly down onto machine table.
- Heavy duty vice enables the full length of the machine bed to be used.
- Rotatable fixing bosses allow 360° movement for accurate alignment.
- Low profile gives maximum cutter access.



	Model No	Horizontal clamping force	Downward force	Jaw Height mm Inch	Fixing bolts mm Inch	Weight KG
Low profile Horizontal 2250 daN Vertical 900 daN 	T500	T2250 daN	900 daN	27 (1 1/8)	M12 (1/2)	3.8
Heavy Duty Horizontal 4500 daN Vertical 1500 daN 	T550	4500 daN	1800 daN	70 (2 3/4)	M16 (5/8) or M20 (3/4)	24



Model No.	Measurements in mm									
	A	A1	A2	B	B1	B2	Min B3	Max B3	B4	S Hole
Low Profile T500	30	150	109	67	35	55	55	65	35	13



Model No.	Measurements in mm									
	A	A1	A2	B	B1	B2	Min B3	Max B3	B4	S Hole
Heavy Duty T550	77	77	195	151	57	93.5	89.5	114.5	57	16.2
	77	245	195	151	53	95.5	91.5	116.5	53	20.2

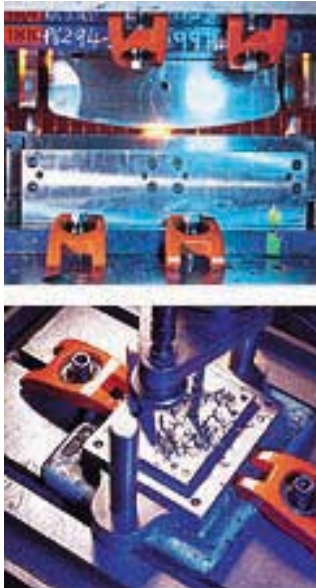


HOLDS WORK SECURELY ON MANY MACHINES, INCLUDING

- Holds press tools on all types of power press.
- Clamps work up to 75mm (3") deep to drilling machines and lathe faceplates
- Constant clamping force ratio between workpiece and table, thanks to self-aligning captive pivot.
- H-shape head's 4-point contact resists tendency for workpiece to rotate.



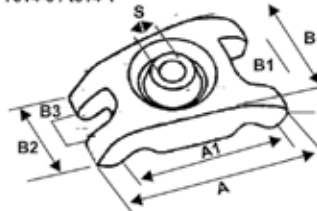
1 clbf = 1kgf
1 clbf = 2.2lbf
1 clbf = 10 N



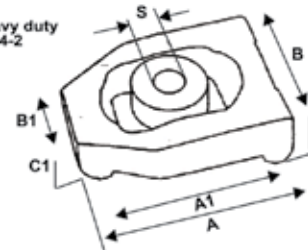
	Model No	Max safe Working Height		Max Fixing Bolt diameter		Clamp Weight KG
		mm	Inch	mm	Inch	
Standard duty 1300dan	T614-0	25	(1")	M12	(1/2")	0.6
Medium duty 650dan	T614-1	57	(2 1/4")	M16 or M12	(5/8") (1/2")	2.7
Heavy duty 8000dan	T614-2	75	(3")	M24	(1")	4.3

Model No.	Measurements in mm							
	A	A1	B	B1	B2	B3	C	S
Standard duty T614-0	110	90	66	36	36	40	20	13
Medium duty T614-1	160	134	100	53	53	65	29	21

Standard duty
T614-0 / T614-1



Heavy duty
T614-2



Model No.	Measurements in mm						
	A	A1	B	B1	C	C1	S
Heavy duty T614-2	170	148	130	65	50	40	26